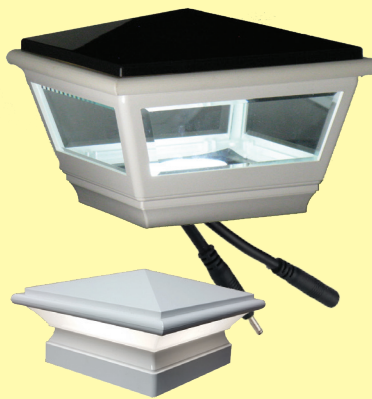


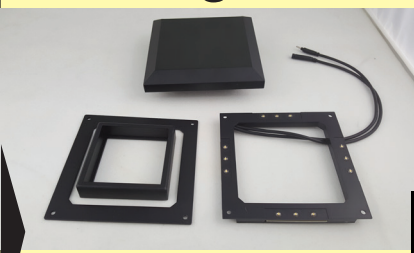
All of these items can be continuously daisy chained in any order. 24" Strip Light is the only item that can not be Daisy Chained and must be used wit 2 in 1 splitter if not at the end of the chain.

Lights



Uses 1.73W each

Metal Post Light



LV Light for Metal Post
LVX3PL
Uses 1.08W each

Sconce



ROUND SCONCE
LVX234SC
Uses 0.58W each



OVAL SCONCE
LVXOVSC
Uses 0.36W each

Star Bright
Flush Mount
Pin Light



LVX38MINI
Uses 0.30W each

Star Bright
Stair Riser



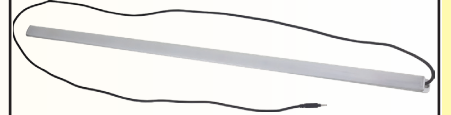
LVX125SRBK
Uses 0.26W each

Star Max
Deck Light

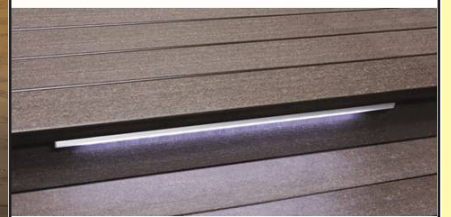


LVX125MAX
Uses 0.24W each

24" Strip Light



Can be used on Vinyl or Metal.
Does Not Daisy Chain.



LVX2STRIP
Uses 1.40W each

Transformers

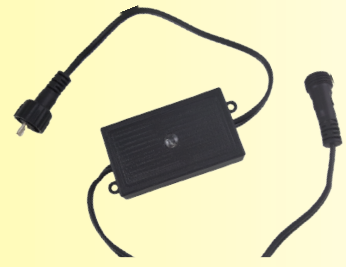


36 Watt Transformer
LVX36WTRDC



121 Watt Transformer
LV120TRANSA

Controls



Dimmer
LVX36WDIMAP
Controlled by Phone App



Photocell
LVX36WPCS
On at Dusk - Off at Dawn

Lead Cables



Under 12W
LVX36W20DC
18 GA Lead cable for 36W
Transformer
No Junction Box Needed



2 in 1 Splitter
LVXSPLIT

10' Extension
Cable
LVX36W10EXT
Used to reach
direct sunlight
for the
Photocell

Additional Items



Extension Cables
36" - LVX3EXT
& 108" - LVX9EXT
Used to reach between lights
for longer distances.



4 Outlet Junction Box
LVX4CON



16 GA Wiring
From 121W Transformer
LV100WR

ADD UP
YOUR WATTS

HOW MANY

(X) 1.73

HOW MANY

(X) 1.08

HOW MANY

(X) 0.58

HOW MANY

(X) 0.36

HOW MANY

(X) 0.30

HOW MANY

(X) 0.26

HOW MANY

(X) 0.24

HOW MANY

(X) 1.40

Total Watts:

Use chart on other side to
help finish the order.

Use the total watts on this side along with the chart on the other side to know just what is needed to complete the job.

What Do I Need?	Pick a Transformer	Pick your Lead cable	CONTROLS		Do I Need a Junction Box?	Connecting The First Light	Connecting The Next Light	How Do I Terminate the job?
			Dimmer LVX36WDIMAP	Photocell LVX36WPCS				
Under 12 Watts of Lighting; Follow this color row for all your requirements!	(LVX36WTRDC) 36 Watt transformer Plugs into Standard 110V External Wall Outlet	(LVX36W20DC) 18 GA 20' long Lead cable with female end connection	YES Plugs in between 36W transformer and lead cable	YES Plugs in between 36W transformer and lead cable	NO Lights plug into 20' long cable, extension cords, splitters and other lights	Plug male end of light into the end of the lead cable from the transformer (LVX36W20DC)	Female plug end will connect to the male plug end of the next light, extension cord or splitter.	Leave included rubber plug in the last female connection
12 - 36 Watts of Lighting; Follow this color row for all your requirements!	(LVX36WTRDC) 36 Watt transformer Plugs into Standard 110V External Wall Outlet	(LVX36W20JB) 18 GA 20' long Lead cable with Junction Box	YES Plugs in between 36W transformer and lead cable	YES Plugs in between 36W transformer and lead cable	YES It is on the end of the wire you connect to the transformer (LVX36W20JB)	Plug male end of light into 1 of 4 plugs on Junction box. Remember, only 12W can connect to each wire!	Female plug end will connect to the male plug end of the next light, extension cord or splitter.	Leave included rubber plug in the last female connection
36 Watts or more of Lighting; Follow this color row for all your requirements!	(LV120TRANSA) 121 Watt transformer Plugs into Standard 110V External Wall Outlet, use as many as required.	(LV100WR) 16 GA Wiring From 121W Transformer also used between each junction box	NO	NO Photocell is already included on 121W transformer	YES (LVX4CON) One Junction Box is required for every 36 watts of lighting on the job. 12W max per wire	Strip 16 GA wire insulation, use shrink tube to seal copper ends together. Connect next Junction box the same way.	Female plug end will connect to the male plug end of the next light, extension cord or splitter.	Wires insert into the last junction box of the chain.



Post Caps
Waypoint® post caps don't simply cap a project, they enhance it. Choose from Glass or Solid caps to transform an ordinary light into something special.



Secondary Handrails
Many building codes now require graspable secondary handrails on decking and railing projects. The Summit® line is helping contractors and their customers meet the demand, with a durable secondary handrail system that is attractive and versatile enough to meet almost any installation challenge.

For more information, please contact:

Waymark Products, LLC
Toll Free: 877-652-6118

Waypoint is a registered trademark of Waymark Products LLC.
Summit is a registered trademark of Waymark Products LLC.
Gorilla is a trademark of Homeland Vinyl Products, Inc.

M1138-RevC
20-089



Low Voltage Lighting Buyers Guide