



WAYMARK®

FENCE AND RAIL ACCESSORIES

2021 CATALOG

ACCESSORIES

Updated 2-05-21

21-036- M1116-21W

Waymark: 877-652-6118 | www.WaymarkProducts.com

Why try to fit a **SQUARE PEG** into a **ROUND HOLE?**



**HOMELAND AND WAYMARK
ARE THE "PERFECT MATCH".**

Homeland and Waymark work together to manufacture railing systems.

Waymark's Summit brackets are designed for a "perfect fit" to Homeland's railing profiles. Other companies manufacture their accessories with an oversize corner radius limiting the range of compatibility to other profiles. By combining Homeland profiles with Waymark accessories your caps and brackets will look beautiful and will not stick out as a "piece-together" project.

Systems are tested for ICC Building Code compliance

Homeland and Waymark have invested into the safety of products by extensively testing Deck and Rail systems for International Building Code compliance. This is backed by our Quality Assurance program and third party audits. We believe that your railing project should not be compromised with profiles and accessories that have not been tested as a system.

Homeland and Waymark are color matched

Are you tired of buying accessories from a company that the colors don't match perfectly with your profiles? Waymark products, through quality control systems, are virtually color matched to Homeland's profiles. Your caps, lighting, brackets, lattice, column, post, and spindles will be a perfect color match to all Homeland profiles.

That's why we say, Homeland and Waymark sell systems...not accessories!



www.HomelandVinyl.com



Loyalty Program - Homeland & Waymark

Ask your sales representative about customer loyalty programs to save you money on a wide selection of profiles and matching accessories.



800-999-6813
info@homelandvinyl.com

HomelandVinyl.com



877.652.6118
sales@waymarkproducts.com
Waymark Products, LLC

WaymarkProducts.com



AFA American
Fence
Association



Table of Contents

3	Waymark Company Statement	Deck-Over Rail.....26
4	Item Key	Deck-Over Adapters26
5	Gorilla Caps & Tops	Summit 2.....27
11.....	Picket Caps	Summit Convex.....28
13.....	Fence Accessories	1-3/4" x 2-1/4" Nexus Rail29
	Lattice 14	Nexus 1 Rail29
	End Caps..... 15	Nexus 2 Rail..... 30
	Hole Plugs..... 16	Nexus 2" x 3-1/2" Rail..... 31
	Gate Pockets 16	
	Rail Mounts 18	32 Gorilla Grab Rail
19.....	Trim Rings & Foot Block	36 Gorilla Solar Lighting
23	Gorilla Guard Rail Systems	41..... Gorilla Matrix
	2"x3-1/2" Rail 24	44..... Gorilla Wrap
	Summit T-Rail..... 24	47..... Gorilla Mounts
	Contour Rail25	52 Miscellaneous
	Summit Adapters.....25	55 Index
		57 Notes

WAYMARK ACCESSORIES

COMPANY STATEMENT

Waymark Products, LLC is dedicated to delivering high quality products and excellent service to our customers without exception. We understand the importance of our customers' success in the Fence, Deck, Railing and Outdoor Living Products markets. We value our relationships with our customers and pledge that we will operate at the highest level of integrity.

CUSTOMER ACCOUNTS

All customers are required to complete an Application for Trade Account and update it periodically. This application requires the signature of a Corporate Officer, Managing Member, Partner or Owner. Waymark Products LLC only sells wholesale. Customers are required to provide a copy of their company's sales tax exemption certificate or resale certificate before any sale can be initiated. Customers are further required to provide Waymark Products LLC updated sales tax exemption or resale certificates upon expiration of the initial certificate provided. Standard terms are payment in full by electronic check, wire transfer, or credit card at time of shipment. Payments can be made at WaymarkProducts.com. Customers requesting credit terms must submit financial information. Credit terms are net 30 days subject to the approval of Waymark® based on financial data provided, credit checks, and payment history. Credit terms are subject to change. Customer accounts outside of agreed terms are subject to being placed On Hold with shipments held until the account is satisfied. Accounts not paid within terms will be charged interest at the rate of 1.5% per month. Prices are subject to change without notice.

PLACING ORDERS

All orders are subject to acceptance and approval. All orders must be submitted in writing by fax or email to Waymark Products, LLC. All product orders must be clearly identified by part number, color, detailed description, and quantity. Illegible orders will not be accepted. All orders will be confirmed in writing with the Terms and Conditions of Sale before acceptance. Confirmed orders cannot be canceled without authorization. Please contact a Waymark® Customer Service Representative for additional order information and requirements.

SHIPMENT OF ORDERS / DAMAGE OR SHORTAGES

Waymark® ships products from the factory and from distribution centers. Waymark reserves the right to ship its customers the products they ordered from any location. All prices are F.O.B. point of shipment. The customer is responsible for reviewing all order confirmations for the correct customer shipping address. Waymark strives to find the cheapest reliable shipping method for all orders. Waymark is not responsible for delays in delivery when caused by strikes, fires, accidents, Acts of God, or other forces outside of Waymark's control. Please contact a Waymark Customer Service Representative for your specific needs and additional shipping information.

All shipments received should be immediately inspected by the customer. All dents, tears, breakages, or other visible damage to both packaging materials and products should be noted on the shipping documents with a copy given to the freight carrier and a copy sent to Waymark. Damages or lost product due to shipping must be reported and claimed from the freight carrier. All claims of material shortages or damaged goods must be made within 48 hours of customer's receipt of products.

RETURNED GOODS POLICY

All returns of products must have the prior written approval of an authorized representative of Waymark®, must be for justifiable reasons such, and must be within 60 days of receipt of product. Customers requesting to return products must submit in writing in advance of return a detailed list of the materials to be returned, date of purchase, invoice number, and reason for return. Custom and special order items will not be accepted for return. Do not return any items without a return authorization. All returned material must be shipped to our TN location freight prepaid and include a list of the products returned and a copy of the Waymark return authorization. Returned products must be received by Waymark in same packaging and condition as originally sent and are subject to our Warehouse Manager's count and inspection. **Any credits issued for approved returns will be based on the invoice price of the returned products at time of purchase by customer less a restocking charge of 20%.**

LIMITED WARRANTY

Waymark® warrants that the products we manufacture are free of defects in materials and workmanship. Products distributed by Waymark, but not manufactured by Waymark, are covered under the original manufacturer's warranty. Please contact a Waymark Customer Service Representative for specific information on the warranty of the Waymark products you wish to purchase. Additional warranty information is detailed in the Terms and Conditions on the back of each invoice.

TERMS AND CONDITIONS OF SALE ARE SPECIFIED WITH ORDER CONFIRMATION AND DETAILED ON THE FRONT AND BACK OF EVERY INVOICE.

ITEM KEY EXPLANATION**COLOR CODE**

W – White T - Tan A - Adobe HM - Honey Maple CG - Chai Gray
MW - Mocha Walnut GT - Green Teak AG - Ash Gray *(see below)*

Quick Tip: Understanding our Accessory part numbers

Each item number is designated by class, dimensions, part description and color.
For example: our 5" Pyramid cap in white (C55PYRAW) is broken out as follows:

Class: Cap Dimension: 5" x 5" Description: Pyramid Color: White

C | 55 | PYRA | W

Here is another example of our 7/8" x 3" Dog Ear picket cap in adobe (P783DEA):

Class: Picket Cap Dimension: 7/8" x 3" Description: Dog Ear Color: Adobe

P | 783 | DE | A

** Ash Gray is available only in
the following Waymark Parts 2021:*

C55PYRA
5" External Pyramid Cap

HP5/8
5/8" Hole Plug

EEC235
2x3-1/2" External End Cap

All Ash Gray orders are considered special orders. Stock will not be produced in any Ash Gray profiles.

[illegible]

WAYMARK®
FENCE AND RAIL ACCESSORIES

21-036- M1116-21W

5

GORILLA™ CAPS - POST AND PICKET CAPS

External Pyramid Caps - Internal Pyramid Caps

4" EXTERNAL PVC PYRAMID CAP

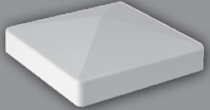


DIMENSIONS: 4" x 4" x 1.46" H
INSIDE CORNER RADIUS: 0.165"
CAP LIP: 0.868"

BOX QTY: 204
BOX WEIGHT: 32 LBS.

PART NUMBER: C44PYRA + W, T, A,
MW, HM, CG, GT
STOCK COLORS: WHITE, TAN, ADOBE, MOCHA WALNUT,
HONEY MAPLE, CHAI GRAY, GREEN TEAK
PALLET QTY: 16 BOXES - 3264 PCS.

4" EXTERNAL SHORT LIP PVC PYRAMID CAP



DIMENSIONS: 4" x 4" x 1.35" H
INSIDE CORNER RADIUS: 0.165"
CAP LIP: 0.537"

BOX QTY: 120
BOX WEIGHT: 13 LBS.

PART NUMBER: C44SHRT + W, T, A
STOCK COLORS: WHITE, TAN, ADOBE

5" EXTERNAL PVC PYRAMID CAP



DIMENSIONS: 5" x 5" x 1.875" H
INSIDE CORNER RADIUS: 0.1719" (11/64")
CAP LIP: 1" H

BOX QTY: 136
BOX WEIGHT: 39 LBS.

PART NUMBER: C55PYRA + W, T, A,
MW, HM, CG, GT
STOCK COLORS: WHITE, TAN, ADOBE, MOCHA WALNUT,
HONEY MAPLE, CHAI GRAY, GREEN TEAK
PALLET QTY: 20 BOXES - 2720 PCS.

6 1/2" EXTERNAL PVC PYRAMID CAP



DIMENSIONS: 6.5" x 6.5"

BOX QTY: 30
BOX WEIGHT: 15 LBS.

PART NUMBER: C65PYRA + W, T, A
STOCK COLORS: WHITE, TAN, ADOBE

8" EXTERNAL PVC PYRAMID CAP



DIMENSIONS: 8" x 8"

BOX QTY: 12
BOX WEIGHT: 7 LBS.

PART NUMBER: C88HORSE + W, T, A
STOCK COLORS: WHITE, TAN, ADOBE

4" INTERNAL PVC PYRAMID CAP



DIMENSIONS: 4" x 4" x 1.55" H
OUTSIDE CORNER RADIUS: 0.25"
INTERNAL FIT OF CAP: 0.75" H

BOX QTY: 192
BOX WEIGHT: 33 LBS.

PART NUMBER: C44IPYRA + W, T, A
STOCK COLORS: WHITE, TAN, ADOBE

GORILLA™ CAPS - POST AND PICKET CAPS

Internal Pyramid Caps - New England Caps - Classic Caps - Gothic Caps

5" INTERNAL PVC PYRAMID CAP

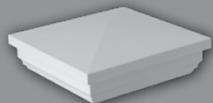


DIMENSIONS: 5" x 5" x 1.46" H
OUTSIDE CORNER RADIUS: 0.25"
INTERNAL FIT OF CAP: 0.74" H

PART NUMBER: C55IPYRA + W, T, A
STOCK COLORS: WHITE, TAN, ADOBE

BOX QTY: 144
BOX WEIGHT: 41 LBS.

4" PVC NEW ENGLAND CAP

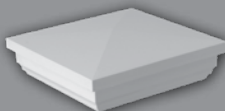


DIMENSIONS: 4" x 4" x 1.78" H
INSIDE CORNER RADIUS: 0.125"
CAP LIP: 1"

PART NUMBER: C44NE + W, T, A,
MW, HM, CG, GT
STOCK COLORS: WHITE, TAN, ADOBE, MOCHA WALNUT,
HONEY MAPLE, CHAI GRAY, GREEN TEAK
PALLET QTY: 60 BOXES - 1680 PCS.
MATCHING TRIM ITEM # TR44NE

BOX QTY: 28
BOX WEIGHT: 11 LBS.

5" PVC NEW ENGLAND CAP



DIMENSIONS: 5" x 5" x 2.192" H
INSIDE CORNER RADIUS: 0.156"
CAP LIP: 1.30" H

PART NUMBER: C55NE + W, T, A,
MW, HM, CG, GT
STOCK COLORS: WHITE, TAN, ADOBE, MOCHA WALNUT,
HONEY MAPLE, CHAI GRAY, GREEN TEAK
PALLET QTY: 45 BOXES - 1080 PCS.
MATCHING TRIM ITEM # TR55NE

BOX QTY: 24
BOX WEIGHT: 16 LBS.

4" PVC CLASSIC CAP

(COMBINE WITH WAYPOINT TOPS TO FURTHER ENHANCE APPEARANCE)



DIMENSIONS: 4" x 4" x 2.55" H
INSIDE CORNER RADIUS: 0.125"
CAP LIP: 1.025"

PART NUMBER: C44CLS + W, T, A,
MW, HM, CG, GT
STOCK COLORS: WHITE, TAN, ADOBE, MOCHA WALNUT,
HONEY MAPLE, CHAI GRAY, GREEN TEAK
PALLET QTY: 60 BOXES - 1440 PCS.
MATCHING TRIM ITEM # TR44CLS

BOX QTY: 24
BOX WEIGHT: 12 LBS.

5" PVC CLASSIC CAP

(COMBINE WITH WAYPOINT TOPS TO FURTHER ENHANCE APPEARANCE)



DIMENSIONS: 5" x 5" x 2.74" H
INSIDE CORNER RADIUS: 0.188"
CAP LIP: 1.28"

PART NUMBER: C55CLS + W, T, A,
MW, HM, CG, GT
STOCK COLORS: WHITE, TAN, ADOBE, MOCHA WALNUT,
HONEY MAPLE, CHAI GRAY, GREEN TEAK
PALLET QTY: 45 BOXES - 1080 PCS.
MATCHING TRIM ITEM # TR55CLS

BOX QTY: 24
BOX WEIGHT: 17 LBS.

4" PVC GOTHIC CAP



DIMENSIONS: 4" x 4" x 7.83" H
INSIDE CORNER RADIUS: 0.061"
CAP LIP: 1.36"

PART NUMBER: C44GOTH + W, T, A, MW
STOCK COLORS: WHITE, TAN, ADOBE, MOCHA WALNUT

BOX QTY: 45
BOX WEIGHT: 25 LBS.

PALLET QTY: 24 BOXES - 1080 PCS.

GORILLA™ CAPS - POST AND PICKET CAPS

Gothic Caps - Dental Caps

5" PVC GOTHIC CAP



DIMENSIONS: 5" x 5" x 9.64" H
INSIDE CORNER RADIUS: 0.031"
CAP LIP: 1.57"

BOX QTY: 48
BOX WEIGHT: 44 LBS.

PART NUMBER: C55GOTH + W, T, A, MW
STOCK COLORS: WHITE, TAN, ADOBE, MOCHA WALNUT

PALLET QTY: 12 BOXES - 576 PCS.

6" PVC DENTAL CAP



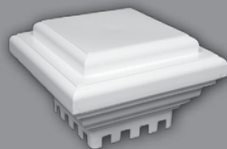
DIMENSIONS: 6" x 6"

BOX QTY: 12
BOX WEIGHT: 30 LBS.

PART NUMBER: C66DENT + W, T, A
STOCK COLORS: WHITE, TAN, ADOBE

MATCHING TRIM ITEM # TR66DENT

6 1/2" PVC DENTAL CAP



DIMENSIONS: 6.5" x 6.5"

BOX QTY: 12
BOX WEIGHT: 32 LBS.

PART NUMBER: C65DENT + W, T, A
STOCK COLORS: WHITE, TAN, ADOBE

MATCHING TRIM ITEM # TR6565DENT

1 3/8" PVC GOTHIC PICKET SQUARE EXTERNAL



DIMENSIONS: 1 3/8" x 1 3/8" x 2.57" H
INSIDE CORNER RADIUS: .031"
CAP LIP: .43"

BOX QTY: 100
BOX WEIGHT: 7 LBS.

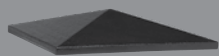
PART NUMBER: P138GOTH + W, T, A
STOCK COLORS: WHITE, TAN, ADOBE

Gorilla™ is a trademark of Homeland Vinyl Products, Inc. Waymark is a registered trademark of Waymark Products, LLC.

GORILLA™ LIGHTING, SOLAR-LOW VOLTAGE-TOPS

WAYPOINT® Metal Waypoint® Tops

4" AND 5" BLACK WAYPOINT® TOPS



DIMENSIONS: TOP FITS ON OUR
CLASSIC CAP

4" - PART NUMBER: CM44TOPBK
5" - PART NUMBER: CM55TOPBK

BOX QTY: 12
BOX WEIGHT: 2 LBS.

* See note below.

4" AND 5" COPPER WAYPOINT® TOPS



DIMENSIONS: TOP FITS ON OUR
CLASSIC CAP

4" - PART NUMBER: CM44TOPCOP
5" - PART NUMBER: CM55TOPCOP

BOX QTY: 12
BOX WEIGHT: 2 LBS.

* See note below.

4" AND 5" STAINLESS WAYPOINT® TOPS



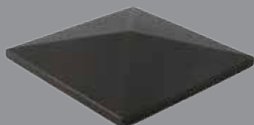
DIMENSIONS: TOP FITS ON OUR
CLASSIC CAP

4" - PART NUMBER: CM44TOPSTN
5" - PART NUMBER: CM55TOPSTN

BOX QTY: 12
BOX WEIGHT: 2 LBS.

* See note below.

4" AND 5" BRONZE WAYPOINT® TOPS



DIMENSIONS: TOP FITS ON OUR
CLASSIC CAP

4" - PART NUMBER: CM44TOPBRZ
5" - PART NUMBER: CM55TOPBRZ

BOX QTY: 12
BOX WEIGHT: 2 LBS.

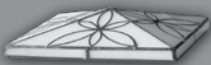
* See note below.

*METAL PLATED TOPS GLUE TO CLASSIC CAP USING WAYMARK'S RAPID SET PVC GLUE. PVC GLUE IS AVAILABLE IN BOTH WHITE & CLEAR.
1.5 OZ & 8 OZ PART # G15OZTUBE (W+C) & G8OZTUBE (W+C)

GORILLA™ LIGHTING, SOLAR-LOW VOLTAGE-TOPS

WAYPOINT® Stained Glass Waypoint® Tops

4" AND 5" PEARL WAYPOINT® TOPS



DIMENSIONS: TOP FITS ON OUR
CLASSIC CAP

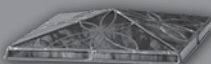
4" - PART NUMBER: CG44TOPPRL

5" - PART NUMBER: CG55TOPPRL

BOX QTY: 12
BOX WEIGHT: 3 LBS.

* See note below.

4" AND 5" CHESTNUT WAYPOINT® TOPS



DIMENSIONS: TOP FITS ON OUR
CLASSIC CAP

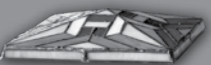
4" - PART NUMBER: CG44TOPCST

5" - PART NUMBER: CG55TOPCST

BOX QTY: 12
BOX WEIGHT: 3 LBS.

* See note below.

4" AND 5" FOREST WAYPOINT® TOPS



DIMENSIONS: TOP FITS ON OUR
CLASSIC CAP

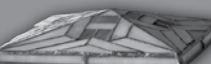
4" - PART NUMBER: CG44TOPFOR

5" - PART NUMBER: CG55TOPFOR

BOX QTY: 12
BOX WEIGHT: 3 LBS.

* See note below.

4" AND 5" HARVEST WAYPOINT® TOPS



DIMENSIONS: TOP FITS ON OUR
CLASSIC CAP

4" - PART NUMBER: CG44TOPPHR

5" - PART NUMBER: CG55TOPPHR

BOX QTY: 12
BOX WEIGHT: 3 LBS.

* See note below.

4" AND 5" SUNFLOWER WAYPOINT® TOPS



DIMENSIONS: TOP FITS ON OUR
CLASSIC CAP

4" - PART NUMBER: CG44TOPSNF

5" - PART NUMBER: CG55TOPSNF

BOX QTY: 12
BOX WEIGHT: 3 LBS.

* See note below.

4" AND 5" GRAPE WAYPOINT® TOPS



DIMENSIONS: TOP FITS ON OUR
CLASSIC CAP

4" - PART NUMBER: CG44TOPGRP

5" - PART NUMBER: CG55TOPGRP

BOX QTY: 12
BOX WEIGHT: 3 LBS.

* See note below.

* GLASS TOPS GLUE TO CLASSIC CAP BY APPLYING A SMALL AMOUNT OF SILICONE ADHESIVE TO ALL 4 CORNERS. PLEASE SEE WWW.WAYMARKPRODUCTS.COM FOR FURTHER INSTRUCTION.

Gorilla™ is a trademark of Homeland Vinyl Products, Inc. Waymark is a registered trademark of Waymark Products, LLC.
Waypoint is an registered trademark of Waymark Products, LLC.

IT & MATCH • PERFECT FIT & MATCH • PERFECT FIT & MATCH • PER
PERFECT FIT & MATCH • PERFECT FIT & MATCH • PERFECT FIT & MAT
PERFECT FIT & MATCH • PERFECT FIT & MATCH • PERFECT FIT & MATCH
E MATCH • PERFECT FIT & MATCH • PERFECT FIT & MATCH • PERFEC
FIT & MATCH • PERFECT FIT & MATCH • PERFECT FIT & MATCH • PER
PERFECT FIT & MATCH • PERFECT FIT & MATCH • PERFECT FIT & MAT



Gorilla® is a registered trademark of Homeland Vinyl Products, Inc.

21-036- M1116-21W

11

GORILLA™ CAPS - POST AND PICKET CAPS

Dog Ear - Spade - Sharp - Arrow Heas - Boyscout Picket Caps,

7/8" x 1 1/2" PVC SPADE PICKET CAP



DIMENSIONS: 7/8" W x 1.5" L x 1.5" H
OUTSIDE CORNER RADIUS: 0.125"
INTERNAL FIT OF CAP: 0.9" H

PART NUMBER: P7815S + W, T, A
STOCK COLORS: WHITE, TAN, ADOBE

BOX QTY: 500
BOX WEIGHT: 14 LBS.

FITS WALL THICKNESS OF: .065 - .075

1 3/8" PVC SHARP PICKET CAP



DIMENSIONS: 1 3/8" x 1 3/8" x 1.25" H
OUTSIDE CORNER RADIUS: 0.125"
INTERNAL FIT OF CAP: 0.5" H

PART NUMBER: P138SH + W, T, A,
MW, HM, CG, GT
STOCK COLORS: WHITE, TAN, ADOBE, MOCHA WALNUT,
HONEY MAPLE, CHAI GRAY, GREEN TEAK

BOX QTY: 500
BOX WEIGHT: 11 LBS.

FITS WALL THICKNESS OF: .065 - .075

1 1/2" PVC SHARP PICKET CAP



DIMENSIONS: 1.5" x 1.5" x 1.40" H
OUTSIDE CORNER RADIUS: 0.109"
INTERNAL FIT OF CAP: 0.60" H

PART NUMBER: P1515SH + W, T, A, MW
STOCK COLORS: WHITE, TAN, ADOBE, MOCHA WALNUT

BOX QTY: 500
BOX WEIGHT: 11 LBS.

FITS WALL THICKNESS OF: .065 - .075

7/8" x 3" PVC DOG EAR PICKET CAP



DIMENSIONS: 7/8" W x 3" L x 1" H
OUTSIDE CORNER RADIUS: 0.125"
INTERNAL FIT OF CAP: 0.8" H

PART NUMBER: P783DE + W, T, A,
MW, HM, CG, GT
STOCK COLORS: WHITE, TAN, ADOBE, MOCHA WALNUT,
HONEY MAPLE, CHAI GRAY, GREEN TEAK

BOX QTY: 300
BOX WEIGHT: 13 LBS.

PALLET QTY: 72 BOXES - 21,600 PCS.
FITS WALL THICKNESS OF: .070-.080

7/8" x 3" PVC SPADE PICKET CAP



DIMENSIONS: 7/8" W x 3" L x 2.02" H
OUTSIDE CORNER RADIUS: 0.125"
INTERNAL FIT OF CAP: 0.8" H

PART NUMBER: P783S + W, T, A
STOCK COLORS: WHITE, TAN, ADOBE

BOX QTY: 250
BOX WEIGHT: 13 LBS.

PALLET QTY: 72 BOXES - 18,000 PCS.
FITS WALL THICKNESS OF: .070-.080

1" x 1" ARROWHEAD PICKET CAP



DIMENSIONS: 1" x 1"

PART NUMBER: P11A + W, BK
STOCK COLORS: WHITE, BLACK

BOX QTY: 200
BOX WEIGHT: 9 LBS

1" x 1" BOYSCOUT PICKET CAP



DIMENSIONS: 1" x 1"

PART NUMBER: P11B + W, BK
STOCK COLORS: WHITE, BLACK

BOX QTY: 200
BOX WEIGHT: 10 LB

FENCE

ACCESSORIES



WAYMARK®
FENCE AND RAIL ACCESSORIES

WAYMARK PRODUCTS

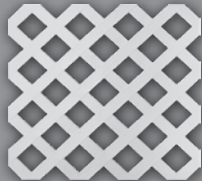
21-036- M1116-21W

Waymark Accessories: 877-652-6118 | WaymarkProducts.com

VINYL LATTICE

Classic Lattice, Privacy Lattice, Pre-Cut Lattice

4' x 8' CLASSIC LATTICE



DIMENSIONS: 4' x 8'
OPENING: 2 3/4"

PART NUMBER: L4X8CLS + W, T, A
STOCK COLORS: WHITE, TAN, ADOBE

PALLET QTY: 50 WHITE, 25 IN COLORS
PALLET WEIGHT: 960 LBS. WHITE, 500 LBS. IN COLORS

4' x 8' PRIVACY LATTICE



DIMENSIONS: 4' x 8'
OPENING: 1 1/16"

PART NUMBER: L4X8PRV + W, T
STOCK COLORS: WHITE, TAN

PALLET QUANTITY: 30
PALLET WEIGHT: 530 LBS.

1' x 8' PRE-CUT CLASSIC LATTICE PALLET



DIMENSIONS: 1' x 8'
OPENING: 2 3/4"

PART NUMBER: LPRECUT + W, T, A
STOCK COLORS: WHITE, TAN, ADOBE

PALLET QTY: 200 WHITE, 100 IN COLORS
PALLET WEIGHT: 960 LBS. WHITE, 500 LBS. IN COLORS

1' x 8' PRE-CUT CLASSIC LATTICE BOXED



DIMENSIONS: 1' x 8'
OPENING: 2 3/4"

PART NUMBER: LCUTBOX + W, T, A
STOCK COLORS: WHITE, TAN, ADOBE

BOX QTY: 16
BOX WEIGHT: 65 LBS.

END CAPS, HOLE PLUGS, GATE POCKETS

End Caps, Hole Plugs

2" x 3 1/2" INTERNAL END CAP



DIMENSIONS: 2" x 3-1/2"

PART NUMBER: EC235 + W, T, A
STOCK COLORS: WHITE, TAN, ADOBE

BOX QTY: 200
BOX WEIGHT: 9 LBS.

FITS WALL THICKNESS OF .090-.110
SURFACE FACE IS FLAT

2" x 3 1/2" EXTERNAL END CAP



DIMENSIONS: 2" x 3-1/2"
CAP LIP: 9/16" H

PART NUMBER: EEC235 + W, T, A,
MW, HM, CG, GT
STOCK COLORS: WHITE, TAN, ADOBE, MOCHA WALNUT,
HONEY MAPLE, CHAI GRAY, GREEN TEAK

BOX QTY: 100
BOX WEIGHT: 6 LBS.

SLIGHT PYRAMID SHAPE ON SURFACE FACE

1 1/2" x 5 1/2" INTERNAL END CAP



DIMENSIONS: 1 1/2" x 5-1/2"

PART NUMBER: EC1555 + W, T, A
STOCK COLORS: WHITE, TAN, ADOBE

BOX QTY: 125
BOX WEIGHT: 7.5 LBS.

FITS WALL THICKNESS OF .090-.110
SURFACE FACE IS FLAT

2" x 6" INTERNAL END CAP



DIMENSIONS: 2" x 6"

PART NUMBER: EC260 + W, T, A
STOCK COLORS: WHITE, TAN, ADOBE

BOX QTY: 100
BOX WEIGHT: 8 LBS.

FITS WALL THICKNESS OF .090-.110
SURFACE FACE IS FLAT

2" x 6" EXTERNAL END CAP



DIMENSIONS: 2" x 6"
CAP LIP: 9/16" H

PART NUMBER: EEC260 + W, T, A,
MW, HM, CG, GT
STOCK COLORS: WHITE, TAN, ADOBE, MOCHA WALNUT,
HONEY MAPLE, CHAI GRAY, GREEN TEAK

BOX QTY: 100
BOX WEIGHT: 9.5 LBS.

SLIGHT PYRAMID SHAPE ON SURFACE FACE

Waymark is a registered trademark of Waymark Products, LLC.

END CAPS, HOLE PLUGS, GATE POCKETS

Hole Plugs, Gate Pockets

5/8" HOLE PLUG



DIAMETER: 5/8"

BOX QTY: 500
BOX WEIGHT: 2 LBS.

PART NUMBER: HP5/8 + W, T, A, BK,
MW, HM, CG, GT
STOCK COLORS: WHITE, TAN, ADOBE, BLACK,
MOCHA WALNUT, HONEY MAPLE, CHAI GRAY, GREEN TEAK
FLAT WITH TAPERED EDGE PROVIDES A FINISHED LOOK.
MATTE FINISH PVC PLUG.

1 1/4" HOLE PLUG



DIAMETER: 1 1/4"

BOX QTY: 200
BOX WEIGHT: 2 LBS.

PART NUMBER: HP125 + W, T, A, BK,
MW, HM, CG, GT
STOCK COLORS: WHITE, TAN, ADOBE, BLACK,
MOCHA WALNUT, HONEY MAPLE, CHAI GRAY, GREEN TEAK
FLAT WITH TAPERED EDGE PROVIDES A FINISHED LOOK.
MATTE FINISH PVC PLUG.

1 1/2" x 5 1/2" DECORATIVE HOLE PLUG



DIMENSIONS: 3" x 7 3/8"

BOX QTY: 36
BOX WEIGHT: 4.5 LBS.

PART NUMBER: HP1555 + W, T, A
STOCK COLORS: WHITE, TAN, ADOBE

CAN COVER UP TO 2" W x 7" H ROUTED HOLE.

2 1/8" x 2 3/4" GATE POCKET



DIMENSIONS: 2 1/8" x 2 3/4" x 4"

BOX QTY: 42
BOX WEIGHT: 10 LBS.

PART NUMBER: GP218X234 + W, T, A
STOCK COLORS: WHITE, TAN, ADOBE

1 3/4" x 3 1/2" GATE POCKET



DIMENSIONS: 1 3/4" x 3 1/2" x 4"

BOX QTY: 48
BOX WEIGHT: 18 LBS.

PART NUMBER: GP17535X4 + W, T, A,
MW, HM, CG, GT
STOCK COLORS: WHITE, TAN, ADOBE, MOCHA WALNUT,
HONEY MAPLE, CHAI GRAY, GREEN TEAK

2" x 3 1/2" GATE POCKET



DIMENSIONS: 2" x 3 1/2" x 4"

BOX QTY: 48
BOX WEIGHT: 22 LBS.

PART NUMBER: GP235X4 + W, T, A
STOCK COLORS: WHITE, TAN, ADOBE

Waymark is a registered trademark of Waymark Products, LLC.

END CAPS, HOLE PLUGS, GATE POCKETS

Gate Pockets

1 3/4" x 5 1/2" DECO GATE POCKET



DIMENSIONS: 1 3/4" x 5 1/2" x 4"

PART NUMBER: GP17555X4 + W, T, A,

MW, HM, CG, GT

STOCK COLORS: WHITE, TAN, ADOBE, MOCHA WALNUT,
HONEY MAPLE, CHAI GRAY, GREEN TEAK

BOX QTY: 36

BOX WEIGHT: 17 LBS.

1 1/2" x 5 1/2" GATE POCKET



DIMENSIONS: 1 1/2" x 5 1/2" x 4"

PART NUMBER: GP1555X4 + W, T, A, MW

STOCK COLORS: WHITE, TAN, ADOBE, MOCHA WALNUT

BOX QTY: 40

BOX WEIGHT: 15 LBS.

2" x 6" GATE POCKET



DIMENSIONS: 2" x 6" x 4"

PART NUMBER: GP26X4 + W, T, A, MW,

STOCK COLORS: WHITE, TAN, ADOBE, MOCHA WALNUT

BOX QTY: 28

BOX WEIGHT: 18 LBS.

2" x 7" GATE POCKET



DIMENSIONS: 2" x 7" x 4"

PART NUMBER: GP27X4 + W, T, A,

MW, HM, CG, GT

STOCK COLORS: WHITE, TAN, ADOBE, MOCHA WALNUT,
HONEY MAPLE, CHAI GRAY, GREEN TEAK

BOX QTY: 24

BOX WEIGHT: 15 LBS.

Waymark is a registered trademark of Waymark Products, LLC.

WAYMARK PRODUCTS

21-036- M1116-21W

Waymark Accessories: 877-652-6118 | WaymarkProducts.com

END CAPS, HOLE PLUGS, GATE POCKETS

Rail Mounts

1-1/2" x 5-1/2" INTERNAL RAIL MOUNT



DIMENSIONS: 1-1/2" x 5-1/2"

PART NUMBER: RM1555 + W, T, A
STOCK COLORS: WHITE, TAN, ADOBE

BOX QTY: 64
BOX WEIGHT: 9 LBS.

1-3/4" x 5-1/2" INTERNAL RAIL MOUNT



DIMENSIONS: 1-3/4" x 5-1/2"

PART NUMBER: RM17555 + W,T,A, MW
STOCK COLORS: WHITE, TAN, ADOBE, MOCHA WALNUT

BOX QTY: 64
BOX WEIGHT: 10 LBS.

2" x 3-1/2" INTERNAL RAIL MOUNT



DIMENSIONS: 2" x 3-1/2"

PART NUMBER: RM235 + W, T, A, MW
STOCK COLORS: WHITE, TAN, ADOBE, MOCHA WALNUT

BOX QTY: 78
BOX WEIGHT: 9 LBS.

2" x 6" INTERNAL RAIL MOUNT



DIMENSIONS: 2" x 6"

PART NUMBER: RM260 + W, T, A
STOCK COLORS: WHITE, TAN, ADOBE

BOX QTY: 64
BOX WEIGHT: 11 LBS.

ADJUSTABLE EXTERNAL RAIL MOUNT WITH SCREWS



As Shipped

Assembled

DIMENSIONS:
1-1/2" TO 2" WIDE AND
5-1/2" TO 7" TALL

BOX QTY: 36 BOX
WEIGHT: 12 LBS.

PART NUMBER: RMEADJ + W, T, A,
MW, HM, CG, GT
STOCK COLORS: WHITE, TAN, ADOBE, MOCHA WALNUT,
HONEY MAPLE, CHAI GRAY, GREEN TEAK

ADJUSTS TO 1-1/2" , 1-3/4" OR 2" WIDE. TRIM COVERS HIDE
FASTENERS. SET INCLUDES 12 STAINLESS STEEL SCREWS.

ADJUSTABLE EXTERNAL RAIL MOUNT REPLACEMENT COVERS



Box Qty 20
BOX WEIGHT: 2 LBS.

PART NUMBER: RMCEADJW + W,T,A
STOCK COLORS: WHITE, TAN, ADOBE

Waymark is a registered trademark of Waymark Products, LLC.

WAYMARK®

FENCE AND RAIL ACCESSORIES

GORILLA™ RAILING - COMPONENTS

Trim Rings

4" NEW ENGLAND TRIM RING



DIMENSIONS: 4" x 4" x 1.30" H
INSIDE CORNER RADIUS: 0.125"
OUTSIDE DIMENSION: 5.49" SQ.

BOX QTY: 40
BOX WEIGHT: 9 LBS.

PART NUMBER: TR44NE + W, T, A,
MW, HM, CG, GT
STOCK COLORS: WHITE, TAN, ADOBE, MOCHA WALNUT,
HONEY MAPLE, CHAI GRAY, GREEN TEAK

MATCHES POST CAP ITEM # C44NE

5" NEW ENGLAND TRIM RING



DIMENSIONS: 5" x 5" x 1.62" H
INSIDE CORNER RADIUS: 0.125"
OUTSIDE DIMENSION: 6.77" SQ.

BOX QTY: 40
BOX WEIGHT: 15 LBS.

PART NUMBER: TR55NE + W, T, A,
MW, HM, CG, GT
STOCK COLORS: WHITE, TAN, ADOBE, MOCHA WALNUT,
HONEY MAPLE, CHAI GRAY, GREEN TEAK

MATCHES POST CAP ITEM # C55NE

4" 2-PIECE NEW ENGLAND TRIM RING



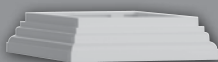
DIMENSIONS: 4" x 4" x 1.30" H
INSIDE CORNER RADIUS: 0.125"
OUTSIDE DIMENSION: 5.49" SQ.

BOX QTY: 50
BOX WEIGHT: 9 LBS.

PART NUMBER: TR442PCNE + W, T, A
STOCK COLORS: WHITE, TAN, ADOBE

MATCHES POST CAP ITEM # C44NE

4" CLASSIC TRIM RING



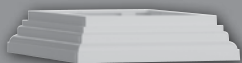
DIMENSIONS: 4" x 4" x 1.40" H
INSIDE CORNER RADIUS: 0.125"
OUTSIDE DIMENSION: 5.75" SQ.

BOX QTY: 36
BOX WEIGHT: 9 LBS.

PART NUMBER: TR44CLS + W, T, A,
MW, HM, CG, GT
STOCK COLORS: WHITE, TAN, ADOBE, MOCHA WALNUT,
HONEY MAPLE, CHAI GRAY, GREEN TEAK

MATCHES POST CAP ITEM # C44CLS

5" CLASSIC TRIM RING



DIMENSIONS: 5" x 5" x 1.48" H
INSIDE CORNER RADIUS: 0.125"
OUTSIDE DIMENSION: 6.78" SQ.

BOX QTY: 36
BOX WEIGHT: 13 LBS.

PART NUMBER: TR55CLS + W, T, A,
MW, HM, CG, GT
STOCK COLORS: WHITE, TAN, ADOBE, MOCHA WALNUT,
HONEY MAPLE, CHAI GRAY, GREEN TEAK

MATCHES POST CAP ITEM # C55CLS

4" LOW TRIM RING



DIMENSIONS: 4" x 4" x 1.00" H
INSIDE CORNER RADIUS: 0.125"
OUTSIDE DIMENSION: 6.78" SQ.

BOX QTY: 40
BOX WEIGHT: 8 LBS.

PART NUMBER: TR44LT + W, T, A,,
MW, HM, CG, GT
STOCK COLORS: WHITE, TAN, ADOBE, MOCHA WALNUT,
HONEY MAPLE, CHAI GRAY, GREEN TEAK

GORILLA™ RAILING - COMPONENTS

Trim Rings & Foot Block

4" MULTI-TRIM RING



DIMENSIONS: 4" x 4" x 1.48" H
INSIDE CORNER RADIUS: 0.125"
OUTSIDE DIMENSION: 6.78" SQ.

BOX QTY: 36
BOX WEIGHT: 10 LBS.

PART NUMBER: TR45MT + W, T, A
STOCK COLORS: WHITE, TAN, ADOBE

USES: TRIM RING, 4" TO 5" TRANSITION,
4" DECORATIVE KNUCKLE USING A 5" POST.

5" MULTI-TRIM RING



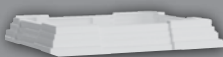
DIMENSIONS: 5" x 5" x 1.48" H
INSIDE CORNER RADIUS: 0.125"
OUTSIDE DIMENSION: 6.78" SQ.

BOX QTY: 40
BOX WEIGHT: 11 LBS.

PART NUMBER: TR565MT + W, T, A
STOCK COLORS: WHITE, TAN, ADOBE

USES: TRIM RING, 5" TO 6.5" TRANSITION,
5" DECORATIVE KNUCKLE USING A 6.5" POST.

4" TO 6" ADJUSTABLE TRIM RING (4-PIECE)



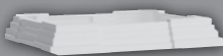
ADJUSTS TO FIT 4" TO 6" POST SIZES
HEIGHT: 1-3/32" (PORCH POST VERSION)
CORNER RADIUS: 7/16"

BOX QTY: 40 SETS
BOX WEIGHT: 12 LBS.

PART NUMBER: TR46ADJ + W, T, A
STOCK COLORS: WHITE, TAN, ADOBE

4 TRIM PIECES (1 SET) SLIDE TOGETHER MAKING
IT EASY TO INSTALL ONE TRIM RING

4" TO 6" ADJUSTABLE TRIM RING (4-PIECE) SMALL RADIUS



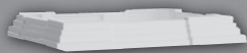
ADJUSTS TO FIT 4" TO 6" POST SIZES
HEIGHT: 1-3/32" (POST WRAP VERSION)
CORNER RADIUS: 1/4"

BOX QTY: 40 SETS
BOX WEIGHT: 12 LBS.

PART NUMBER: TR46WAD + W, T, A
STOCK COLORS: WHITE, TAN, ADOBE

USED FOR POST WRAPS
4 TRIM PIECES (1 SET) SLIDE TOGETHER MAKING
IT EASY TO INSTALL ONE TRIM RING

6 1/2" TO 12" ADJUSTABLE TRIM RING (4-PIECE)



ADJUSTS TO FIT 6 1/2" TO 12" POSTS
HEIGHT: 2-3/32"
CORNER RADIUS: 1/4"

BOX QTY: 10 SETS
BOX WEIGHT: 15 LBS.

PART NUMBER: TR6512ADJ + W, T, A
STOCK COLORS: WHITE, TAN, ADOBE

4 TRIM PIECES (1 SET) SLIDE TOGETHER MAKING
IT EASY TO INSTALL ONE TRIM RING

ADJUSTABLE RAIL FOOT



IMPROVED

ADJUSTS TO FIT 2" TO 4" HEIGHT
SCREW CAP ADDED FOR A MORE FINISHED LOOK

BOX QTY: 50
BOX WEIGHT: 8 LBS.

PART NUMBER: RF138+ W, T, A,
MW, HM, CG, GT
STOCK COLORS: WHITE, TAN, ADOBE, MOCHA WALNUT,
HONEY MAPLE, CHAI GRAY, GREEN TEAK
CUT TO FIT, INSTALLS WITH ONE SCREW BEFORE
OR AFTER INSTALLATION

GORILLA™ RAILING - COMPONENTS

Post Skirts, Column Base & Trim Rings

6" DENTAL POST SKIRT



DIMENSIONS: 6" x 6"

PART NUMBER: TR66DENT + W, T, A
STOCK COLORS: WHITE, TAN, ADOBE

BOX QTY: 36
BOX WEIGHT: 38 LBS.

MATCHES POST CAP ITEM # C66DENT

6 1/2" DENTAL POST SKIRT



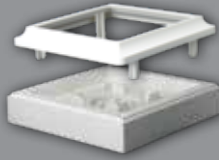
DIMENSIONS: 6 1/2" x 6 1/2"

PART NUMBER: TR6565DENT + W, T, A
STOCK COLORS: WHITE, TAN, ADOBE

BOX QTY: 25
BOX WEIGHT: 41 LBS.

MATCHES POST CAP ITEM # C6565DENT

8" X 8" OR 6.5" X 6.5" COLUMN BASE, TRIM & TRANSITION



DIMENSIONS: 8" x 8" / 6 1/2" x 6 1/2"

PART NUMBER: TR865CB + W, T, A
STOCK COLORS: WHITE, TAN, ADOBE

BOX QTY: 16
BOX WEIGHT: 35 LBS.

MOUNTS AN 8" x 8" POST, 6.5" x 6.5" POST OR
TRANSITIONS FROM 8" TO 6.5" FOR A DECORATIVE
APPEARANCE

8" X 8" COLUMN BASE ONLY



DIMENSIONS: 8" x 8"

PART NUMBER: TR88CB + W, T, A
STOCK COLORS: WHITE, TAN, ADOBE

BOX QTY: 24
BOX WEIGHT: 45 LBS.

MOUNTS AN 8" x 8" POST

GORILLA™ GUARD RAIL SUMMIT® 2x3-1/2" & T-RAIL SYSTEM

SUMMIT® 2" x 3-1/2" RAIL BRACKET

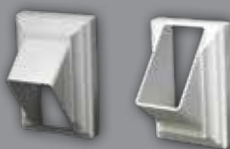


INSIDE DIMENSIONS: 2" x 3 1/2"
INSIDE CORNER RADIUS: 0.125"
OVERALL DIMENSIONS: 3.745" x 5.20"
BOX QTY: 24 KITS (2 PER KIT)
BOX WEIGHT: 16 LBS.

PART NUMBER: BL235S + W, T, A,
MW, HM, CG, GT
STOCK COLORS: WHITE, TAN, ADOBE, MOCHA WALNUT,
HONEY MAPLE, CHAI GRAY, GREEN TEAK

BASE, TRIM COVERS AND SCREWS INCLUDED

SUMMIT® 2" x 3-1/2" STAIR BRACKET



INSIDE DIMENSIONS: 2" x 3 1/2"
INSIDE CORNER RADIUS: 0.125"
OVERALL DIMENSIONS: 3.745" x 5.20"
BOX QTY: 24 KITS (2 PER KIT)
BOX WEIGHT: 16 LBS.

PART NUMBER: BS235S + W, T, A,
MW, HM, CG, GT
STOCK COLORS: WHITE, TAN, ADOBE, MOCHA WALNUT,
HONEY MAPLE, CHAI GRAY, GREEN TEAK

BASE, TRIM COVERS AND SCREWS INCLUDED
DEGREE OF ANGLE: 31-38 DEGREES

REPLACEMENT SUMMIT® 2" x 3-1/2" BRACKET TRIM COVER



FOR BRACKET PART#: BL235S

BOX QTY: 20
BOX WEIGHT: 2 LBS.

PART NUMBER: BRC235S + W, T, A, MW
STOCK COLORS: WHITE, TAN, ADOBE, MOCHA WALNUT
CUSTOM COLORS AVAILABLE: YES

**COVERS ONLY FOR REPAIR/REPLACEMENT OF
LOST OR DAMAGED BRACKET COVERS**

REPLACEMENT SUMMIT® 2" x 3-1/2" STAIR BRACKET TRIM COVER



FOR BRACKET PART#: BS235S

BOX QTY: 20
BOX WEIGHT: 2 LBS.

PART NUMBER: BSC235S + W, T, A, MW
STOCK COLORS: WHITE, TAN, ADOBE, MOCHA WALNUT
CUSTOM COLORS AVAILABLE: YES

**COVERS ONLY FOR REPAIR/REPLACEMENT OF
LOST OR DAMAGED BRACKET COVERS**

SUMMIT® T-RAIL BRACKET



INSIDE DIMENSIONS: 3 1/2" x 3 1/2"
OVERALL DIMENSIONS: 3.745" x 5.20"
BOX QTY: 24 KITS (2 PER KIT)
BOX WEIGHT: 16 LBS.

PART NUMBER: BLTRLS + W, T, A,
MW, HM, CG, GT
STOCK COLORS: WHITE, TAN, ADOBE, MOCHA WALNUT,
HONEY MAPLE, CHAI GRAY, GREEN TEAK

BASE, TRIM COVERS AND SCREWS INCLUDED

SUMMIT® T-RAIL STAIR BRACKET



INSIDE DIMENSIONS: 3 1/2" x 3 1/2"
OVERALL DIMENSIONS: 3.745" x 5.20"
BOX QTY: 24 KITS (2 PER KIT)
BOX WEIGHT: 18 LBS.

PART NUMBER: BSTRLS + W, T, A,
MW, HM, CG, GT
STOCK COLORS: WHITE, TAN, ADOBE, MOCHA WALNUT,
HONEY MAPLE, CHAI GRAY, GREEN TEAK

BASE, TRIM COVERS AND SCREWS INCLUDED
DEGREE OF ANGLE: 31-38 DEGREES

REPLACEMENT SUMMIT® T-RAIL BRACKET TRIM COVER



FOR BRACKET PART#: BLTRLS

BOX QTY: 20
BOX WEIGHT: 2 LBS.

PART NUMBER: BRCTRLS + W, T, A, MW
STOCK COLORS: WHITE, TAN, ADOBE, MOCHA WALNUT
CUSTOM COLORS AVAILABLE: YES

**COVERS ONLY FOR REPAIR/REPLACEMENT OF
LOST OR DAMAGED BRACKET COVERS**

Gorilla™ is a trademark of Homeland Vinyl Products, Inc. Waymark is a registered trademark of Waymark Products, LLC. Summit is an registered trademark of Waymark Products, LLC.

GORILLA™ GUARD RAIL

SUMMIT® T-RAIL & CONTOUR SYSTEM

REPLACEMENT SUMMIT® T-RAIL STAIR BRACKET TRIM COVER



FOR BRACKET PART#:BSTRLS

PART NUMBER: BSCTRLS + W, T, A, MW
STOCK COLORS: WHITE, TAN, ADOBE, MOCHA WALNUT
CUSTOM COLORS AVAILABLE: YES



BOX QTY: 20
BOX WEIGHT: 2 LBS.

COVERS ONLY FOR REPAIR/REPLACEMENT OF
LOST OR DAMAGED BRACKET COVERS

SUMMIT® CONTOUR BRACKET



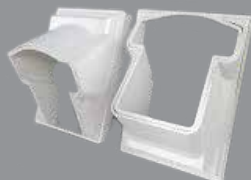
INSIDE DIMENSIONS: 3 x 3 1/2"
OVERALL DIMENSIONS: 3.745" x 5.20"
FITS HOMELAND VINYL PRODUCTS CONTOUR
RAIL

PART NUMBER: BLCONS + W, T, A
STOCK COLORS: WHITE, TAN, ADOBE

BASE, TRIM COVERS AND SCREWS INCLUDED

BOX QTY: 24 KITS (2 PER KIT)
BOX WEIGHT: 16 LBS.

SUMMIT® CONTOUR STAIR BRACKET



INSIDE DIMENSIONS: 3 x 3 1/2"
OVERALL DIMENSIONS: 3.745" x 5.20"
FITS HOMELAND VINYL PRODUCTS CONTOUR
RAIL

PART NUMBER: BSCONS + W, T, A
STOCK COLORS: WHITE, TAN, ADOBE

BASE, TRIM COVERS AND SCREWS INCLUDED
DEGREE OF ANGLE: 31-38 DEGREES

BOX QTY: 24 KITS (2 PER KIT)
BOX WEIGHT: 18 LBS.

SUMMIT® 22 1/2 DEGREE ADAPTER



DIMENSIONS: 3 15/16" x 5 3/8" H

PART NUMBER: BA225S + W, T, A,
MW, HM, CG, GT
STOCK COLORS: WHITE, TAN, ADOBE, MOCHA WALNUT,
HONEY MAPLE, CHAI GRAY, GREEN TEAK
WORKS WITH BOTH STRAIGHT AND STAIR
BRACKETS.

BOX QTY: 10 KITS (2 PER KIT)
BOX WEIGHT: 5.5 LBS.

SUMMIT® 45 DEGREE ADAPTER



DIMENSIONS: 3 15/16" x 5 3/8" H
Fits 6" to 10"

PART NUMBER: BA45S + W, T, A,
MW, HM, CG, GT
STOCK COLORS: WHITE, TAN, ADOBE, MOCHA WALNUT,
HONEY MAPLE, CHAI GRAY, GREEN TEAK
WORKS WITH BOTH STRAIGHT AND STAIR
BRACKETS.

BOX QTY: 10 KITS (2 PER KIT)
BOX WEIGHT: 8.3 LBS.

SUMMIT® 8" COLUMN ADAPTER



DIMENSIONS: 3 15/16" x 5 3/8" H

PART NUMBER: BA8CS + W, T, A
STOCK COLORS: WHITE, TAN, ADOBE

WORKS WITH BOTH STRAIGHT AND STAIR
BRACKETS.

BOX QTY: 10 KITS (2 PER KIT)
BOX WEIGHT: 4 LBS.

GORILLA™ GUARD RAIL

SUMMIT® DECK-OVER SYSTEM

SUMMIT® DECK-OVER BRACKET

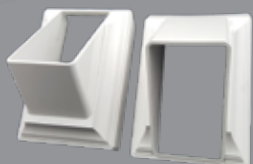


INSIDE DIMENSIONS: 2" x 3 1/2"
INSIDE CORNER RADIUS: 0.125"
OVERALL DIMENSIONS: 3.745" x 4.479"

BOX QTY: 24 KITS (2 PER KIT)
BOX WEIGHT: 16 LBS.

PART NUMBER: BLDOVS + W, T, A,
MW, HM, CG, GT
STOCK COLORS: WHITE, TAN, ADOBE, MOCHA WALNUT,
HONEY MAPLE, CHAI GRAY, GREEN TEAK
BASE, TRIM COVERS AND SCREWS INCLUDED.
DECK RAIL ATTACHMENT KIT SOLD SEPARATELY

SUMMIT® DECK-OVER STAIR BRACKET



INSIDE DIMENSIONS: 2" x 3 1/2"
INSIDE CORNER RADIUS: 0.125"
OVERALL DIMENSIONS: 3.745" x 5.20"

BOX QTY: 24 KITS (2 PER KIT)
BOX WEIGHT: 16 LBS.

PART NUMBER: BS235SDO + W, T, A,
MW, HM, CG, GT
STOCK COLORS: WHITE, TAN, ADOBE, MOCHA WALNUT,
HONEY MAPLE, CHAI GRAY, GREEN TEAK
BASE, TRIM COVERS AND SCREWS INCLUDED
DEGREE OF ANGLE: 34 DEGREES

SUMMIT® 22 1/2 DEGREE DECK-OVER ADAPTER



DIMENSIONS:
4.5" x 3-23/32" x 1-1/2"

BOX QTY: 10 KITS (2 PER KIT)
BOX WEIGHT: 5.5 LBS.

PART NUMBER: BA225DOV + W, T, A,
MW, HM, CG, GT
STOCK COLORS: WHITE, TAN, ADOBE, MOCHA WALNUT,
HONEY MAPLE, CHAI GRAY, GREEN TEAK
WORKS WITH DECK-OVER AND FIELD CUT
BRACKETS.

SUMMIT® 45 DEGREE DECK-OVER ADAPTER



DIMENSIONS:
4.5" x 3-23/32" x 2-1/8"
Fits 6" to 10"

BOX QTY: 10 KITS (2 PER KIT)
BOX WEIGHT: 6 LBS.

PART NUMBER: BA45DOV + W, T, A,
MW, HM, CG, GT
STOCK COLORS: WHITE, TAN, ADOBE, MOCHA WALNUT,
HONEY MAPLE, CHAI GRAY, GREEN TEAK
WORKS WITH DECK-OVER AND FIELD CUT
BRACKETS.

SUMMIT® 8" DECK-OVER COLUMN ADAPTER



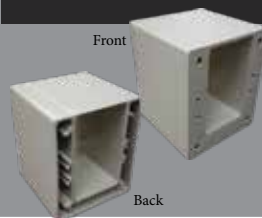
DIMENSIONS:
4.5" x 3-23/32" x 21/32"

BOX QTY: 10 KITS (2 PER KIT)
BOX WEIGHT: 4 LBS.

PART NUMBER: BA8CDOV + W, T, A
STOCK COLORS: WHITE, TAN, ADOBE

WORKS WITH DECK-OVER AND FIELD CUT
BRACKETS.

SUMMIT® DECK-OVER FIELD CUT ADAPTER



INSIDE DIMENSIONS: 2" x 3 1/2"
INSIDE CORNER RADIUS: 0.125"
OVERALL DIMENSIONS: 4.5" x 3-23/32" x 3-5/8"

BOX QTY: 10 KITS (2 PER KIT)
BOX WEIGHT: 21 LBS.

PART NUMBER: BAFCDOV + W, T, A
STOCK COLORS: WHITE, TAN, ADOBE

CUSTOM FIELD CUT FOR STAIR APPLICATIONS.
USE WITH SUMMIT DECK-OVER BRACKETS
NO SCREWS INCLUDED

SUMMIT® DECK BOARD RAILING ATTACHMENT KIT



DIMENSIONS: 3.5" x 1 1/4" H
CONTAINS: 2 BRACKETS AND 8 SS SCREWS

BOX QTY: 50 KITS (2 PER KIT)
BOX WEIGHT: 7 LBS.

PART NUMBER: B35DBRD

USE WITH SUMMIT DECK-OVER BRACKETS.

Gorilla™ is a trademark of Homeland Vinyl Products, Inc. Waymark is a registered trademark of Waymark Products, LLC.
Summit is an registered trademark of Waymark Products, LLC.

GORILLA™ GUARD RAIL

SUMMIT® 2 SYSTEM

SUMMIT® 2 • 2" X 3-1/2" BRACKET



INSIDE DIMENSIONS: 2" x 3 1/2"
INSIDE CORNER RADIUS: 0.125"
OVERALL DIMENSIONS: 3.745" x 4.479"

BOX QTY: 24 KITS (2 PER KIT)
BOX WEIGHT: 16 LBS.

PART NUMBER: BL235S2 + W, T, A,

STOCK COLORS: WHITE, TAN, ADOBE

BRACKET, SCREW CAPS AND SCREWS INCLUDED.

SUMMIT® 2 • 2" X 3-1/2" STAIR BRACKET



INSIDE DIMENSIONS: 2" x 3 1/2"
INSIDE CORNER RADIUS: 0.125"
OVERALL DIMENSIONS: 3.745" x 5.20"

BOX QTY: 24 KITS (2 PER KIT)
BOX WEIGHT: 16 LBS.

PART NUMBER: BS235S2 + W, T, A,

STOCK COLORS: WHITE, TAN, ADOBE

BRACKET, SCREW CAPS AND SCREWS INCLUDED.

SUMMIT® 2 T-RAIL BRACKETS



INSIDE DIMENSIONS: 2" x 3 1/2"
INSIDE CORNER RADIUS: 0.125"
OVERALL DIMENSIONS: 3.745" x 5.20"

BOX QTY: 24 KITS (2 PER KIT)
BOX WEIGHT: 16 LBS.

PART NUMBER: BLTRLS2 + W, T, A,

STOCK COLORS: WHITE, TAN, ADOBE

BRACKET, SCREW CAPS AND SCREWS INCLUDED.

SUMMIT® 2 T-RAIL STAIR BRACKETS



INSIDE DIMENSIONS: 2" x 3 1/2"
INSIDE CORNER RADIUS: 0.125"
OVERALL DIMENSIONS: 3.745" x 5.20"

BOX QTY: 24 KITS (2 PER KIT)
BOX WEIGHT: 16 LBS.

PART NUMBER: BSTRLS2 + W, T, A,

STOCK COLORS: WHITE, TAN, ADOBE

BRACKET, SCREW CAPS AND SCREWS INCLUDED.

SUMMIT® 2 SCREW COVER CAPS



BOX QTY: 25 BAGS
(20 PCS PER BAG)
BOX WEIGHT: 2 LBS.

PART NUMBER: SCS2+ W, T, A,
STOCK COLORS: WHITE, TAN, ADOBE

FOR USE WITH SUMMIT® 2 BRACKETS

SUMMIT® 2 BRACKET HOLE PLUGS



BOX QTY: 25 BAGS
(20 PCS PER BAG)
BOX WEIGHT: 2 LBS.

PART NUMBER: HPS2+ W, T, A,
STOCK COLORS: WHITE, TAN, ADOBE

FOR USE WITH SUMMIT® 2 BRACKETS

GORILLA™ GUARD RAIL

SUMMIT® CONVEX SYSTEM



SUMMIT® CONVEX 2" X 3-1/2" BRACKET

INSIDE DIMENSIONS: 2" x 3 1/2"
INSIDE CORNER RADIUS: 0.125"
OVERALL DIMENSIONS: 3.745" x 4.479"

PART NUMBER: BL235SX + W, T, A,

STOCK COLORS: WHITE, TAN, ADOBE

BOX QTY: 24 KITS (2 PER KIT)
BOX WEIGHT: 16 LBS.

BASE, TRIM COVERS AND SCREWS INCLUDED.



SUMMIT® CONVEX 2" X 3-1/2" STAIR BRACKET

INSIDE DIMENSIONS: 2" x 3 1/2"
INSIDE CORNER RADIUS: 0.125"
OVERALL DIMENSIONS: 3.745" x 5.20"

PART NUMBER: BS235SX + W, T, A,

STOCK COLORS: WHITE, TAN, ADOBE

BOX QTY: 24 KITS (2 PER KIT)
BOX WEIGHT: 16 LBS.

BASE, TRIM COVERS AND SCREWS INCLUDED



SUMMIT® CONVEX T-RAIL BRACKET

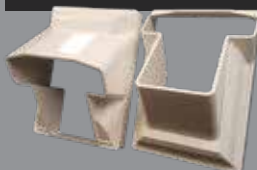
INSIDE DIMENSIONS: 2" x 3 1/2"
INSIDE CORNER RADIUS: 0.125"
OVERALL DIMENSIONS: 3.745" x 4.479"

PART NUMBER: BLTRLSX + W, T, A,

STOCK COLORS: WHITE, TAN, ADOBE

BOX QTY: 24 KITS (2 PER KIT)
BOX WEIGHT: 16 LBS.

BASE, TRIM COVERS AND SCREWS INCLUDED.



SUMMIT® CONVEX T-RAIL STAIR BRACKET

INSIDE DIMENSIONS: 2" x 3 1/2"
INSIDE CORNER RADIUS: 0.125"
OVERALL DIMENSIONS: 3.745" x 5.20"

PART NUMBER: BSTRLSX + W, T, A,

STOCK COLORS: WHITE, TAN, ADOBE

BOX QTY: 24 KITS (2 PER KIT)
BOX WEIGHT: 16 LBS.

BASE, TRIM COVERS AND SCREWS INCLUDED

GORILLA™ GUARD RAIL

NEXUS® 1 & NEXUS® 2 SYSTEM

NEXUS® RAILING ALUMINUM MOUNTING BRACKET KIT



OVERALL DIMENSIONS:
2-1/4" x 1-7/8" x 1-1/8"

PART NUMBER: FC3408

BOX QTY: 54 KITS
BOX WEIGHT: 36 LBS.

Specifically for Homeland Nexus Railing System
4 BRACKETS PER KIT

NEXUS® RAILING POLYMER MOUNTING BRACKET KIT



OVERALL DIMENSIONS:
2-1/4" x 1-7/8" x 1-1/8"

PART NUMBER: FC3416

BOX QTY: ?? KITS
BOX WEIGHT: ?? LBS.

Specifically for Homeland Nexus 2 Railing System
?? BRACKETS PER KIT

NEXUS® 1-3/4" X 2-1/4" BOTTOM COVER CLIP



OVERALL DIMENSIONS:
2-11/16" x 2-5/8" x 1-1/4"

PART NUMBER: FC3410 + W, T, A
STOCK COLORS: WHITE, TAN, ADOBE

BOX QTY: Contact Customer Service for
Box Qty 90
BOX WEIGHT: 8 LBS.

Specifically for Homeland Nexus Railing System

NEXUS® 1-3/4" X 2-1/4" BOTTOM BRACKETS & SCREWS



OVERALL DIMENSIONS:
3-1/2" x 5-1/2"

PART NUMBER: FC3414 + W, T, A
STOCK COLORS: WHITE, TAN, ADOBE

BOX QTY: Contact Customer Service for
Box Qty 60 / 50
BOX WEIGHT: 28 LBS.

Specifically for Homeland Nexus Railing System

NEXUS® 1 1-3/4" T-RAIL BRACKET TOP COVER CLIP



OVERALL DIMENSIONS:
3-1/4" x 2-1/4" x 1-1/4"

PART NUMBER: FC3409 + W, T, A
STOCK COLORS: WHITE, TAN, ADOBE

BOX QTY: 90
BOX WEIGHT: 7 LBS.

Specifically for Homeland Nexus Railing System

NEXUS® 1-3/4" T-RAIL STAIR BRACKETS & SCREWS



OVERALL DIMENSIONS:
3-1/2" x 5-1/2"

PART NUMBER: FC3413 + W,T,A
STOCK COLORS: WHITE, TAN, ADOBE

BOX QTY: Contact Customer Service for
Box Qty 60
BOX WEIGHT: 25 LBS.

Specifically for Homeland Nexus Railing System

NEXUS® 1 1-3/4" T-RAIL TOP ADAPTER CUT BLOCK



OVERALL DIMENSIONS:
3-1/4" x 2-1/4" x 1-1/4"

PART NUMBER: FC3411 + W,T,A
STOCK COLORS: WHITE, TAN, ADOBE

BOX QTY: Contact Customer Service for
Box Qty 60
BOX WEIGHT: 14 LBS.

Specifically for Homeland Nexus Railing System
CUSTOM FIELD CUT FOR STAIR APPLICATIONS.

Availability and profile dimensions are subject to change without notice. Check with manufacturer before ordering. All dimensions are subject to manufacturer's tolerances. Gorilla™ is a trademark of Homeland Vinyl Products, Inc. Nexus® is a registered trademark of Homeland Vinyl Products, Inc. Waymark is a registered trademark of Waymark Products, LLC.

GORILLA™ GUARD RAIL

NEXUS® 1 & NEXUS® 2 SYSTEM

NEXUS® 1 1-3/4" X 2-1/4" BOTTOM ADAPTER CUT BLOCK



OVERALL DIMENSIONS:
2-11/16" x 2-5/8" x 1-1/4"

BOX QTY: Contact Customer Service for
Box Qty 60
BOX WEIGHT: 15 LBS.

PART NUMBER: FC3412 + W, T, A
STOCK COLORS: WHITE, TAN, ADOBE

Specifically for Homeland Nexus Railing System
CUSTOM FIELD CUT FOR STAIR APPLICATIONS.

NEXUS® 2 T-RAIL BRACKET TOP COVER CLIP



OVERALL DIMENSIONS:
3-1/4" x 2-1/4" x 1-1/4"

BOX QTY: 90
BOX WEIGHT: 7 LBS.

PART NUMBER: FC3417 + W, T, A
STOCK COLORS: WHITE, TAN, ADOBE

Specifically for Homeland Nexus Railing System

NEXUS® 2 T-RAIL STAIR BRACKETS & SCREWS



OVERALL DIMENSIONS:
3-1/2" x 5-1/2"

BOX QTY: Contact Customer Service for
Box Qty 60
BOX WEIGHT: 25 LBS.

PART NUMBER: FC3418 + W, T, A
STOCK COLORS: WHITE, TAN, ADOBE

Specifically for Homeland Nexus Railing System

NEXUS® 22 1/2 DEGREE ADAPTER



DIMENSIONS:
3-3/8" x 2-3/4" x 1-3/8"

BOX QTY: 10 sets of 4 with screws
BOX WEIGHT: 6 LBS.

PART NUMBER: FC3420 + W, T, A,
MW, HM, CG, GT
STOCK COLORS: WHITE, TAN, ADOBE

WORKS WITH BOTH STRAIGHT AND STAIR
BRACKETS.

NEXUS® 45 DEGREE ADAPTER



DIMENSIONS:
3-3/8" x 2-3/4" x 1-15/16"

BOX QTY: 10 sets of 4 with screws
BOX WEIGHT: 7 LBS.

PART NUMBER: FC3421 + W, T, A,
MW, HM, CG, GT
STOCK COLORS: WHITE, TAN, ADOBE

WORKS WITH BOTH STRAIGHT AND STAIR
BRACKETS.

NEXUS® 8" COLUMN ADAPTER



DIMENSIONS:
3-3/8" x 2-3/4" x 1/2"

BOX QTY: 10 sets of 4 with screws
BOX WEIGHT: 4 LBS.

PART NUMBER: FC3422 + W, T, A
STOCK COLORS: WHITE, TAN, ADOBE

WORKS WITH BOTH STRAIGHT AND STAIR
BRACKETS.

NEXUS® STAIR SCREW PLUGS



OVERALL DIMENSIONS:
4-1/2" x 2-1/2"

BOX QTY: Contact Customer Service for
Box Qty 60
BOX WEIGHT: 3 LBS.

PART NUMBER: FC3415 + W, T, A
STOCK COLORS: WHITE, TAN, ADOBE

Specifically for Homeland Nexus Railing System

Gorilla™ is a trademark of Homeland Vinyl Products, Inc. Nexus® is a registered trademark of Homeland Vinyl Products, Inc. Waymark is a registered trademark of Waymark Products, LLC.

GORILLA™ GUARD RAIL

NEXUS® 2" x 3-1/2" SYSTEM

NEXUS® 2" x 3-1/2" BRACKETS & SCREWS



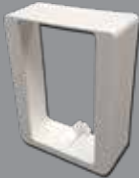
OVERALL DIMENSIONS:
2-3/4" x 3-3/4" x 1-1/8"

PART NUMBER: FC3423 + W,T,A
STOCK COLORS: WHITE, TAN, ADOBE

Box Qty 72
BOX WEIGHT: 26 LBS.

Specifically for Homeland Nexus Railing System

NEXUS® 2" x 3-1/2" BRACKET COVER CLIP



OVERALL DIMENSIONS:
2-1/2" x 3-13/16" x 1-1/4"

PART NUMBER: FC3424 + W, T, A
STOCK COLORS: WHITE, TAN, ADOBE

BOX QTY: 72
BOX WEIGHT: 7 LBS.

Specifically for Homeland Nexus Railing System

NEXUS® 2" x 3-1/2" STAIR BRACKETS & SCREWS



OVERALL DIMENSIONS:
3-3/4" x 5-3/8" x 3"

PART NUMBER: FC3425 + W,T,A
STOCK COLORS: WHITE, TAN, ADOBE

Box Qty 48
BOX WEIGHT: 26 LBS.

Specifically for Homeland Nexus Railing System

GORILLA® GRAB RAIL ACCESSORIES



Gorilla™ is a trademark of Homeland Vinyl Products, Inc.

WAYMARK PRODUCTS

21-036- M1116-21W

Waymark Accessories: 877-652-6118 | WaymarkProducts.com

GORILLA™ GRAB RAIL - SUMMIT® SECONDARY HANDRAIL

8'8" Handrail, Mounting Brackets, End Caps, Post Returns, Wall Mounts and Corners

8'8" HANDRAIL WITH ALUMINUM INSERT



DIMENSIONS: 8'8" L x 1.5" OUTSIDE
DIAMETER

PART NUMBER: HR88RAIL + W, T, A, BK
STOCK COLORS: WHITE, TAN, ADOBE, BLACK

BOX QTY: 8
BOX WEIGHT: 49 LBS.

3" OFFSET ALUMINUM MOUNTING BRACKET (Redesigned)



BASE DIAMETER: 2-7/8"

PART NUMBER: HRX3BRAKA + W, T, A, BK
STOCK COLORS: WHITE, TAN, ADOBE, BLACK

BOX QTY: 24
BOX WEIGHT: 27 LBS.

Includes hardware to install part.

1" HANDRAIL END CAP



OUTSIDE DIAMETER: 1.5"
INSIDE DIAMETER: 1"

PART NUMBER: HR1ECAP + W, T, A, BK
STOCK COLORS: WHITE, TAN, ADOBE, BLACK

BOX QTY: 16
BOX WEIGHT: 3 LBS.

90 DEGREE ALUMINUM POST RETURN (Redesigned)



BASE DIAMETER: 3"
CENTER LINE TO PIPE FITTING: 3"

PART NUMBER: HRX90RETA + W, T, A, BK
STOCK COLORS: WHITE, TAN, ADOBE, BLACK

BOX QTY: 24
BOX WEIGHT: 31 LBS.

Includes hardware to install part.
Beauty rings are included.

STRAIGHT ALUMINUM WALL MOUNT (Redesigned)



BASE DIAMETER: 3"
FACE MOUNTED TO PIPE FITTING: 1 3/4"

PART NUMBER: HRX134SWMA + W, T, A, BK
STOCK COLORS: WHITE, TAN, ADOBE, BLACK

BOX QTY: 12
BOX WEIGHT: 10 LBS.

Includes hardware to install part.

90 DEGREE INSIDE & OUTSIDE CORNER (Redesigned)



OUTSIDE DIAMETER: 1.5"
CENTER LINE TO PIPE FITTING: 2 3/4"

PART NUMBER: HRX90INOUTC + W, T, A, BK
STOCK COLORS: WHITE, TAN, ADOBE, BLACK
USE OUR JOINER KIT TO ATTACH TO HANDRAIL

BOX QTY: 24
BOX WEIGHT: 21 LBS.

INSIDE CORNER MOUNTING BRACKET (Redesigned)



CENTER LINE TO CORNER FACE:
4-3/4"

PART NUMBER: HRX6INBKA + W, T, A, BK
STOCK COLORS: WHITE, TAN, ADOBE, BLACK

BOX QTY: 24
BOX WEIGHT: 8 LBS.

Includes hardware to install part.

GORILLA™ GRAB RAIL - SUMMIT® SECONDARY HANDRAIL

Stair Elbows and Returns

1 1/2" METAL BEAUTY RING



INSIDE DIAMETER: 1.5"
INSERTION DEPTH: 1/8"

PART NUMBER: HRX15BRA+W + T, A, BK
STOCK COLORS: WHITE, TAN, ADOBE, BLACK

BOX QTY: 24
BOX WEIGHT: 1 LB.

COVERS THE SEAM BETWEEN TWO SECTIONS OF PIPE.

32 DEGREE STAIR ELBOW



OVERALL LENGTH: 12 3/4"
OUTSIDE DIAMETER: 1.5"

PART NUMBER: HR32ELBW + W, T, A, BK
STOCK COLORS: WHITE, TAN, ADOBE, BLACK

BOX QTY: 12
BOX WEIGHT: 8 LBS.

ALUMINUM REINFORCED
USE OUR JOINER KIT TO ATTACH TO HANDRAIL
INCLUDES (2) BEAUTY RINGS

34 DEGREE STAIR ELBOW



OVERALL LENGTH: 12 3/4"
OUTSIDE DIAMETER: 1.5"

PART NUMBER: HR34ELBW + W, T, A, BK
STOCK COLORS: WHITE, TAN, ADOBE, BLACK

BOX QTY: 12
BOX WEIGHT: 8 LBS.

ALUMINUM REINFORCED
USE OUR JOINER KIT TO ATTACH TO HANDRAIL
INCLUDES (2) BEAUTY RINGS

36 DEGREE STAIR ELBOW



OVERALL LENGTH: 12 3/4"
OUTSIDE DIAMETER: 1.5"

PART NUMBER: HR36ELBW + W, T, A, BK
STOCK COLORS: WHITE, TAN, ADOBE, BLACK

BOX QTY: 12
BOX WEIGHT: 8 LBS.

ALUMINUM REINFORCED
USE OUR JOINER KIT TO ATTACH TO HANDRAIL
INCLUDES (2) BEAUTY RINGS

5 DEGREE HANDICAP ELBOW



OVERALL LENGTH: 12"
OUTSIDE DIAMETER: 1.5"

PART NUMBER: HR5ELBOW + W, T, A, BK
STOCK COLORS: WHITE, TAN, ADOBE, BLACK

BOX QTY: 12
BOX WEIGHT: 7 LBS.

ALUMINUM REINFORCED
USE OUR JOINER KIT TO ATTACH TO HANDRAIL
INCLUDES (2) BEAUTY RINGS

180 DEGREE POST RETURN



OVERALL LENGTH: 27"
OUTSIDE DIAMETER: 1.5"
1 BEAUTY RING INCLUDED

PART NUMBER: HR180PR + W, T, A
STOCK COLORS: WHITE, TAN, ADOBE

BOX QTY: 12
BOX WEIGHT: 15 LBS.

HEAVY WALL PVC PIPE
USE OUR JOINER KIT TO ATTACH TO HANDRAIL
INCLUDES (1) BEAUTY RING AND (1) END CAP

GORILLA™ GRAB RAIL - SUMMIT® SECONDARY HANDRAIL

Handicap Loop, and Joiners

HANDICAP LOOP



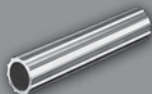
DIMENSIONS: 12" x 18" x 12"
1 BEAUTY RING INCLUDED

PART NUMBER: HR12LOOP + W, T, A, BK
STOCK COLORS: WHITE, TAN, ADOBE, BLACK

BOX QTY: 12
BOX WEIGHT: 28 LBS.

ALUMINUM REINFORCED
USE OUR JOINER KIT TO ATTACH TO HANDRAIL
INCLUDES (1) BEAUTY RING AND (1) END CAP

6" ALUMINUM JOINER KIT WITH SCREWS



OUTSIDE DIAMETER: 1"

PART NUMBER: HR6JOINA
STOCK COLORS: N/A

BOX QTY: 48
BOX WEIGHT: 8 LBS.

EXTERNAL ADJUSTABLE JOINER



OUTSIDE DIAMETER: 1.5"

PART NUMBER: HRXESJOIN + W, T, A, BK
STOCK COLORS: WHITE, TAN, ADOBE, BLACK

BOX QTY: 24
BOX WEIGHT: 30LBS.

Includes hardware to install part.

GORILLA® SOLAR LIGHTING & ACCESSORIES

Gorilla™ is a trademark of Homeland Vinyl Products, Inc.





SOLAR POST CAP LIGHTING

SMART CIRCUIT TECHNOLOGY
THE LATEST IN CIRCUIT TECHNOLOGY



REAL GLASS
WITH BEVELED LENS

EASY ACCESS TO
BATTERIES
*SIMPLY REMOVE THE TOP

REFLECTOR PLATE
EFFECTIVELY DISPERSES MORE LIGHT
THAN TRADITIONAL SOLAR LIGHTING

HAND MADE STAINED GLASS AND PLATED METAL TOP OPTIONS
MADE IN USA QUALITY PVC AND ASA MATERIAL
AESTHETICALLY PLEASING TAPERED FRAME
MATCH WITH WAYPOINT® STYLE TOPS

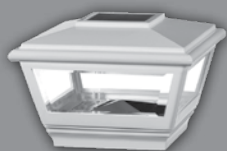
*BATTERY ACCESS TO STAINED GLASS TOPS IS EVEN EASIER! SIMPLY LIFT UP ON SOLAR COLLECTOR.

Waymark is a registered trademark of Waymark Products, LLC. Waypoint is an registered trademark of Waymark Products, LLC.

GORILLA™ LIGHTING, SOLAR-LOW VOLTAGE-TOPS

WAYPOINT® Solar Post Cap Lighting - White, Black, Copper and Stainless Top

4" WAYPOINT® SOLAR LIGHT

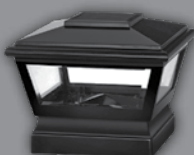


DIMENSIONS: 4" x 4" x 4 3/4" H
 AVAILABLE 3.5" ADAPTER WILL ATTACH TO PVC,
 WOOD, METAL
 BOX QTY: 12
 BOX WEIGHT: 21 LBS.

Stock Colors & Part Numbers:

WhiteSLWHWH4W - (Shown)
 BlackSLBKBK4BK
 Tan.....SLTT4T
 Adobe.....SLAA4A

5" WAYPOINT® SOLAR LIGHT

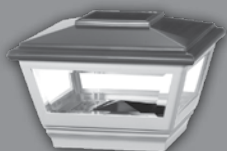


DIMENSIONS: 5" x 5" x 5 1/4" H
 BOX QTY: 12
 BOX WEIGHT: 22 LBS.

Stock Colors & Part Numbers:

WhiteSLWHWH5W
 BlackSLBKBK5BK - (Shown)
 Tan.....SLTT5T
 Adobe.....SLAA5A

4" COPPER TOP WAYPOINT® SOLAR LIGHT

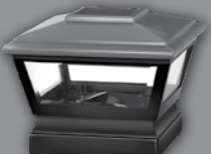


DIMENSIONS: 4" x 4" x 4 3/4" H
 AVAILABLE 3.5" ADAPTER WILL ATTACH TO PVC,
 WOOD, METAL
 BOX QTY: 12
 BOX WEIGHT: 21 LBS.

Stock Colors & Part Numbers:

WhiteSLCOPWH4W - (Shown)
 BlackSLCOPBK4BK
 Tan.....SLCOPT4T
 Adobe.....SLCOPA4A

5" COPPER TOP WAYPOINT® SOLAR LIGHT

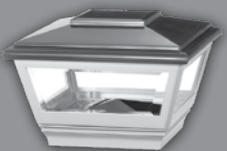


DIMENSIONS: 5" x 5" x 5 1/4" H
 BOX QTY: 12
 BOX WEIGHT: 22 LBS.

Stock Colors & Part Numbers:

WhiteSLCOPWH5W
 BlackSLCOPBK5BK - (Shown)
 Tan.....SLCOPT5T
 Adobe.....SLCOPA5A

4" STAINLESS TOP WAYPOINT® SOLAR LIGHT

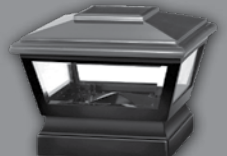


DIMENSIONS: 4" x 4" x 4 3/4" H
 AVAILABLE 3.5" ADAPTER WILL ATTACH TO PVC,
 WOOD, METAL
 BOX QTY: 12
 BOX WEIGHT: 21 LBS.

Stock Colors & Part Numbers:

WhiteSLSTNWH4W - (Shown)
 BlackSLSTNBK4BK
 Tan.....SLSTNT4T
 Adobe.....SLSTNA4A

5" STAINLESS TOP WAYPOINT® SOLAR LIGHT



DIMENSIONS: 5" x 5" x 5 1/4" H
 BOX QTY: 12
 BOX WEIGHT: 22 LBS.

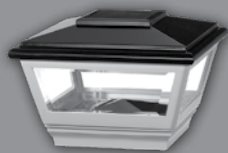
Stock Colors & Part Numbers:

WhiteSLSTNWH5W
 BlackSLSTNBK5BK - (Shown)
 Tan.....SLSTNT5T
 Adobe.....SLSTNA5A

GORILLA™ LIGHTING, SOLAR-LOW VOLTAGE-TOPS

WAYPOINT® Solar Post Cap Lighting - Black, Forest and Sunflower Top

4" BLACK TOP WAYPOINT® SOLAR LIGHT WITH WHITE BASE

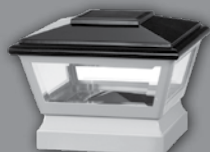


DIMENSIONS: 4" x 4" x 4 3/4" H
AVAILABLE 3.5" ADAPTER WILL ATTACH TO PVC, WOOD, METAL
BOX QTY: 12
BOX WEIGHT: 21 LBS.

Stock Colors & Part Numbers:

WhiteSLBKWH4W - (Shown)
 Tan.....SLBKT4T
 Adobe.....SLBKA4A

5" BLACK TOP WAYPOINT® SOLAR LIGHT WITH WHITE BASE

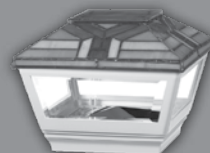


DIMENSIONS: 5" x 5" x 5 1/4" H
BOX QTY: 12
BOX WEIGHT: 22 LBS.

Stock Colors & Part Numbers:

WhiteSLBKWH5W - (Shown)
 Tan.....SLBKT5T
 Adobe.....SLBKA5A

4" FOREST TOP WAYPOINT® SOLAR LIGHT W/ WHITE BASE

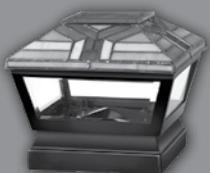


DIMENSIONS: 4" x 4" x 5" H
AVAILABLE 3.5" ADAPTER WILL ATTACH TO PVC, WOOD, METAL
BOX QTY: 12
BOX WEIGHT: 25 LBS.

Stock Colors & Part Numbers:

WhiteSLFORWH4W - (Shown)
 BlackSLFORBK4BK
 Tan.....SLFORT4T
 Adobe.....SLFORA4A

5" FOREST TOP WAYPOINT® SOLAR LIGHT W/ BLACK BASE



DIMENSIONS: 5" x 5" x 5 1/4" H
BOX QTY: 12
BOX WEIGHT: 26 LBS.

Stock Colors & Part Numbers:

WhiteSLFORWH5W
 BlackSLFORBK5BK - (Shown)
 Tan.....SLFORT5T
 Adobe.....SLFORA5A

4" SUNFLOWER TOP WAYPOINT® SOLAR LIGHT W/ WHITE BASE



DIMENSIONS: 4" x 4" x 5" H
AVAILABLE 3.5" ADAPTER WILL ATTACH TO PVC, WOOD, METAL
BOX QTY: 12
BOX WEIGHT: 25 LBS.

Stock Colors & Part Numbers:

WhiteSLSNFWH4W - (Shown)
 BlackSLSNFBK4BK
 Tan.....SLSNFT4T
 Adobe.....SLSNFA4A

5" SUNFLOWER TOP WAYPOINT® SOLAR LIGHT W/ BLACK BASE



DIMENSIONS: 5" x 5" x 5 1/4" H
BOX QTY: 12
BOX WEIGHT: 26 LBS.

Stock Colors & Part Numbers:

WhiteSLSNFWH5W
 BlackSLSNFBK5BK - (Shown)
 Tan.....SLSNFT5T
 Adobe.....SLSNFA5A

GORILLA™ LIGHTING, SOLAR-LOW VOLTAGE-TOPS

WAYPOINT® Solar Post Cap Lighting - Grape Top, Harbor, Circuits, Adapter, Batteries

4" GRAPE TOP WAYPOINT® SOLAR LIGHT W/ WHITE BASE



DIMENSIONS: 4" x 4" x 5" H

AVAILABLE 3.5" ADAPTER WILL ATTACH TO PVC,
WOOD, METAL

BOX QTY: 12

BOX WEIGHT: 25 LBS.

Stock Colors & Part Numbers:

White SLGRPWH4W - (Shown)

Black SLGRPBK4BK

Tan SLGRPT4T

Adobe SLGRPA4A

5" GRAPE TOP WAYPOINT® SOLAR LIGHT W/ BLACK BASE



DIMENSIONS: 5" x 5" x 5 1/4" H

BOX QTY: 12

BOX WEIGHT: 26 LBS.

Stock Colors & Part Numbers:

White SLGRPWH5W

Black SLGRPBK5BK - (Shown)

Tan SLGRPT5T

Adobe SLGRPA5A

REPLACEMENT CIRCUIT FOR SOLID COLOR TOPS (NOT METAL)



FITS 4" AND 5" TOP

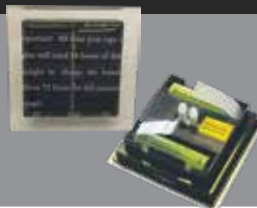
PART NUMBER: C-0113225

BOX QTY: 1

FITS 4" AND 5" SOLAR LIGHTS.

CIRCUIT IS REPLACED FROM UNDERSIDE OF
COLOR TOPS

REPLACEMENT CIRCUIT FOR STAINED GLASS TOPS



FITS 4" AND 5" TOP

PART NUMBER: C-134077

BOX QTY: 1

FITS 4" AND 5" SOLAR LIGHTS.

CIRCUIT IS REPLACED FROM TOP OF STAINED
GLASS TOPS

3-1/2" SOLAR LIGHT ADAPTER



DIMENSIONS: 3 1/2" x 3 1/2"

PART NUMBER: SL35ADPTW

STOCK COLORS: WHITE

CUSTOM COLORS AVAILABLE: YES

BOX QTY: 1

FITS 4" TAPERED STYLE LIGHT

GORILLA® MATRIX

ACCESSORIES



Gorilla® is a registered trademark of Homeland Vinyl Products, Inc.

WAYMARK PRODUCTS

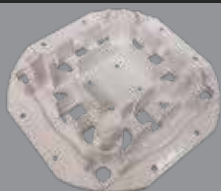
21-036- M1116-21W

Waymark Accessories: 877-652-6118 | WaymarkProducts.com

GORILLA® MATRIX PLATE & TRIM

GORILLA® MATRIX PLATE AND TRIM

GORILLA® MATRIX MOUNTING PLATE W/ BUSHING & TRIM



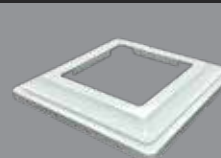
DIMENSIONS: 8" X 8"

PART NUMBER: BR88UCM + W, T, A
STOCK COLORS: WHITE, TAN, ADOBE

BOX QTY: 1 (2 KITS PER BOX)
WEIGHT: 6 LBS.

KIT INCLUDES, GORILLA MATRIX MOUNTING
PLATE, BUSHING & UNIVERSAL TRIM

5" X 5" SQUARE COLUMN TRIM



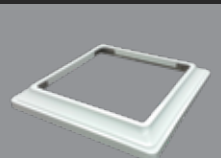
DIMENSIONS: 5" x 5"

PART NUMBER: TR55CT + W, T, A
STOCK COLORS: WHITE, TAN, ADOBE

BOX QTY: 19 BAGS
(2 EACH PER BAG - LABELED)
WEIGHT: 16 LBS.

THIS TRIM ATTACHES TO THE UNIVERSAL TRIM
OR TRANSITION FROM 8" X 8" TO 5" X 5"

6-1/2" X 6-1/2" SQUARE COLUMN TRIM



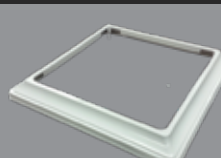
DIMENSIONS: 6-1/2" X 6-1/2"

PART NUMBER: TR6565CT + W, T, A
STOCK COLORS: WHITE, TAN, ADOBE

BOX QTY: 17 BAGS
(2 EACH PER BAG - LABELED)
WEIGHT: 11 LBS.

THIS TRIM ATTACHES TO THE UNIVERSAL TRIM OR
TRANSITION FROM 8" X 8" TO 6-1/2" X 6-1/2"

8" X 8" SQUARE COLUMN TRIM



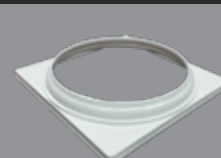
DIMENSIONS: 8" X 8"

PART NUMBER: TR88CT + W, T, A
STOCK COLORS: WHITE, TAN, ADOBE

BOX QTY: 11 BAGS
(2 EACH PER BAG - LABELED)
WEIGHT: 10 LBS.

THIS TRIM ATTACHES TO THE UNIVERSAL TRIM

6-5/8" ROUND COLUMN TRIM



DIMENSIONS: 6.625" X 6.625"

PART NUMBER: TR658RCT + W, T, A
STOCK COLORS: WHITE, TAN, ADOBE

BOX QTY: 17 BAGS
(2 EACH PER BAG - LABELED)
WEIGHT: 15 LBS.

THIS TRIM ATTACHES TO THE UNIVERSAL TRIM
OR TRANSITION FROM 8" X 8" TO 6-5/8" ROUND

8.4" ROUND COLUMN TRIM



DIMENSIONS: 8.4" X 8.4"

PART NUMBER: TR84RCT + W, T, A
STOCK COLORS: WHITE, TAN, ADOBE

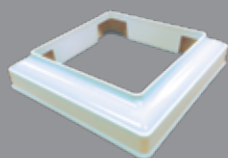
BOX QTY: 20 BAGS
(2 EACH PER BAG - LABELED)
WEIGHT: 19 LBS.

THIS TRIM ATTACHES TO THE UNIVERSAL TRIM

GORILLA® MATRIX PLATE & TRIM

GORILLA® MATRIX PLATE AND TRIM

5" TO 6-1/2" TRANSITION COLUMN TRIM



DIMENSIONS: 6-1/2" x 6-1/2"

PART NUMBER: TR565TCT + W, T, A
STOCK COLORS: WHITE, TAN, ADOBE

BOX QTY: 8 BAGS
(2 EACH PER BAG - LABELED)
WEIGHT: 7 LBS.

TRANSITION FROM 6-1/2" TO 5"

ADJUSTABLE PERGOLA CLIPS



DIMENSIONS: Adjusts to accommodate
profiles 1-1/2" W, 1-3/4" W & 2" W

PART NUMBER: PCADJ
Colors: White, Tan, Adobe and Mocha Walnut

BOX QTY: 50

2 PER BAG WITH 8 SCREWS

GORILLA® WRAP



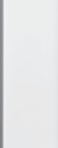



PROFILES & ACCESSORIES



Gorilla® is a registered trademark of Homeland Vinyl Products, Inc.

GORILLA® WRAP

8 Piece Gorilla Post Wraps

1-3/4" x 10' GORILLA® POST WRAP CORNER TRIM		
	Gorilla® Wrap Corner	WAYMARK PART NUMBER:
	AL - 10'	W17510CRN + W, T, A
	Box Qty: 20	STOCK COLORS: WHITE, TAN, ADOBE
4" x 10' GORILLA® POST WRAP COVERAGE SLAT		
	4" Gorilla® Wrap Insert	WAYMARK PART NUMBER:
	Covers sides of 3 1/4" to 4 1/4"	W410SLAT + W, T, A
	AL - 10'	STOCK COLORS: WHITE, TAN, ADOBE
	Box Qty: 20	
6" x 10' GORILLA® POST WRAP COVERAGE SLAT		
	6" Gorilla® Wrap Insert	WAYMARK PART NUMBER:
	Covers sides of 5 1/4" to 6 1/4"	W610SLAT + W, T, A
	AL - 10'	STOCK COLORS: WHITE, TAN, ADOBE
	Box Qty: 20	
8" x 10' GORILLA® POST WRAP COVERAGE SLAT		
	8" Gorilla® Wrap Insert	WAYMARK PART NUMBER:
	Covers sides of 7 1/4" to 8 1/4"	W810SLAT + W, T, A
	AL - 10'	STOCK COLORS: WHITE, TAN, ADOBE
	Box Qty: 20	
10" x 10' GORILLA® POST WRAP COVERAGE SLAT		
	10" Gorilla® Wrap Insert	WAYMARK PART NUMBER:
	Covers sides of 9 1/4" to 10 1/4"	W1010SLAT + W, T, A
	AL - 10'	STOCK COLORS: WHITE, TAN, ADOBE
	Box Qty: 20	
12" x 10' GORILLA® POST WRAP COVERAGE SLAT		
	12" Gorilla® Wrap Insert	PART NUMBER: W1210SLAT + W, T, A
	Covers sides of 11 1/4" to 12 1/4"	STOCK COLORS: WHITE, TAN, ADOBE
	AL - 10'	
	Box Qty: 20	

Gorilla® is a registered trademark of Homeland Vinyl Products, Inc.

GORILLA® WRAP

4 Piece Gorilla Post Wrap ,

4 PIECE - 4" x 4" X 10' GORILLA® POST WRAP



4"x4" Gorilla® Wrap
Pcs/Box: 5 posts per box
Box Qty: 20
Length - 10'

WAYMARK PART NUMBER:

W410BOX + W, T, A

STOCK COLORS: WHITE, TAN, ADOBE

- 4 PIECES TO MAKE 1 POST,
- FULL BOX WILL COVER A TOTAL OF (5) POSTS
- COVERS POSTS BETWEEN 3-7/16" - 4-3/8"
- ANY TWIST OR OUT OF SQUARE WILL REDUCE COVERAGE SIZE

4 PIECE - 6" x 6" X 10' GORILLA® POST WRAP



6"x6" Gorilla® Wrap
Pcs/Box: 4 posts per box
Box Qty: 16
Length - 10'

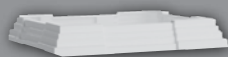
WAYMARK PART NUMBER:

W610BOX + W, T, A

STOCK COLORS: WHITE, TAN, ADOBE

- 4 PIECES TO MAKE 1 POST,
- FULL BOX WILL COVER A TOTAL OF (4) POSTS
- COVERS POSTS BETWEEN 5-1/8" - 6"
- ANY TWIST OR OUT OF SQUARE WILL REDUCE COVERAGE SIZE

4" TO 6" ADJUSTABLE TRIM RING (4-PIECE) SMALL RADIUS P70



ADJUSTS TO FIT 4" TO 6" POST SIZES
 HEIGHT: 1-3/32" (POST WRAP VERSION)
 CORNER RADIUS: 1/4"

BOX QTY: 40 SETS
 BOX WEIGHT: 12 LBS.

PART NUMBER: TR46WAD + W, T, A

STOCK COLORS: WHITE, TAN, ADOBE

USED FOR POST WRAPS
 4 TRIM PIECES (1 SET) SLIDE TOGETHER MAKING
 IT EASY TO INSTALL ONE TRIM RING

GORILLA® MOUNTS ACCESSORIES

Gorilla® is a trademark of Homeland Vinyl Products, Inc.



WAYMARK PRODUCTS

21-036- M1116-21W

Waymark Accessories: 877-652-6118 | WaymarkProducts.com



SUMMIT® POST MOUNT SYSTEM

COMPONENT ATTRIBUTES:

ADJUSTABLE SOCKET:

- Plumb at the top of the post mount
- Attach socket to pipe
- Slide post sleeve over socket



DIE CAST BASE:

- Mounts to any surface
- No Shims
- Die Cast Zinc
- Solid connection to any decking or concrete surface



GORILLA™ MOUNTS -POST MOUNTS

Summit® Post Mount, Post Mount Components, Universal Hardware Kit

SUMMIT® POST MOUNT BASE COMPONENT



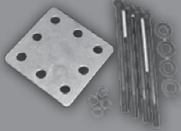
DIMENSIONS: 4" x 4"
FOR USE WITH 1 7/8" PIPE
USE 3/8" FASTENERS - NOT INCLUDED

BOX QTY: 18
BOX WEIGHT: 32 LBS.

PART NUMBER: PM178ZBASE
STOCK COLORS: N/A

MOUNTS TO DECK OR CONCRETE SURFACE EASILY AND ACCEPTS 1-7/8" OD PIPE OF VARIOUS LENGTHS TO INSTALL FENCE, RAILING OR OTHER OUTDOOR STRUCTURES.

UNIVERSAL HARDWARE KIT



DIMENSIONS: 4" x 4" PLATE

BOX QTY: 1
BOX WEIGHT: 5 LBS.

PART NUMBER: PMHARDKIT
STOCK COLORS: N/A

FOR USE WITH SUMMIT™ MOUNTS WHEN INSTALLING DECK APPLICATIONS

5" ADJUSTABLE 1-PIECE POST SOCKET - 1 7/8 PIPE



DIAMETER: 5"
SLEEVE USING 5" x 5" POST .150 WALL OR LESS

BOX QTY: 100
BOX WEIGHT: 36 LBS.

PART NUMBER: PS5DIAM
STOCK COLORS: N/A

FOR USE WITH 1 7/8" OD STEEL PIPE.

GORILLA™ MOUNTS -POST MOUNTS

Post Sockets , Gorilla® Post Mounts

4" POST MOUNT WITH WINGS



DIMENSIONS: 4" x 4"

PART NUMBER: PM44WING

STOCK COLORS: N/A

BOX QTY: 34

BOX WEIGHT: 23 LBS.

ACCEPTS MOST WALL THICKNESSES

5" POST MOUNT WITH WINGS



DIMENSIONS: 5" x 5"

PART NUMBER: PM55WING

STOCK COLORS: N/A

BOX QTY: 26

BOX WEIGHT: 24 LBS.

ACCEPTS MOST WALL THICKNESSES

4" GORILLA® POST MOUNT WITH HARDWARE



DIMENSIONS: 4" x 4"

PART NUMBER: PM44GORW

STOCK COLORS: N/A

BOX QTY: 1

BOX WEIGHT: 4 LBS.

INCLUDES HARDWARE AND TRIM RING

ACCEPTS MOST WALL THICKNESSES

4" GORILLA® POST MOUNT WITHOUT HARDWARE



DIMENSIONS: 4" x 4"

PART NUMBER: PM44GORWO

STOCK COLORS: N/A

BOX QTY: 9

BOX WEIGHT: 18 LBS.

ACCEPTS MOST WALL THICKNESSES

5" GORILLA® POST MOUNT WITH HARDWARE



DIMENSIONS: 5" x 5"

PART NUMBER: PM55GORW

STOCK COLORS: N/A

BOX QTY: 1

BOX WEIGHT: 5 LBS.

INCLUDES HARDWARE AND TRIM RING

ACCEPTS MOST WALL THICKNESSES

5" GORILLA® POST MOUNT WITHOUT HARDWARE



DIMENSIONS: 5" x 5"

PART NUMBER: PM55GORWO

STOCK COLORS: N/A

BOX QTY: 6

BOX WEIGHT: 18 LBS.

ACCEPTS MOST WALL THICKNESSES

GORILLA™ MOUNTS -POST MOUNTS

Gorilla® Post Mount Trim & Hardware Kit

VINYL WEDGE COMPONENT FOR GORILLA® MOUNT

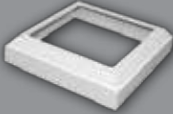


DIMENSIONS: 3" L x 1/4" H
1/4" IS AT HIGHEST POINT

PART NUMBER: WEDGE
STOCK COLORS: N/A

BOX QTY: 1500
BOX WEIGHT: 3.5 LBS.

4" POST TRIM COMPONENT FOR GORILLA® MOUNT

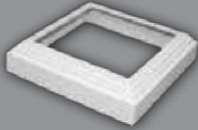


DIMENSIONS: 4" x 4"

PART NUMBER: TR44GOR + W, T, A
STOCK COLORS: WHITE, TAN, ADOBE

BOX QTY: 39
BOX WEIGHT: 11 LBS.

5" POST TRIM COMPONENT FOR GORILLA® MOUNT



DIMENSIONS: 5" x 5"

PART NUMBER: TR55GOR + W, T, A
STOCK COLORS: WHITE, TAN, ADOBE

BOX QTY: 29
BOX WEIGHT: 10 LBS.

HARDWARE KIT FOR GORILLA® MOUNT



DIMENSIONS: 4" x 4" PLATE

PART NUMBER: PMGORHARDK
STOCK COLORS: N/A

BOX QTY: 1
BOX WEIGHT: 5.6 LBS.

INCLUDES 2 SHIMS, 2 MOUNTING PLATES,
SCREWS, BOLTS AND ALL-THREAD ROD

MISCELLANEOUS



MISCELLANEOUS - FASTENERS AND ADHESIVES

Rivets, Router Bits, Rail Lock & Push Pin

7/8" DOME HEAD STYLE RIVET



DIMENSIONS: 3/16" x 7/8"

PART NUMBER: F875RIVET + P, W, T
STOCK COLORS: STANDARD, WHITE, TAN

BOX QTY: 500
BOX WEIGHT: 2 LBS.

GRIP RANGE APPROXIMATELY .040-.350

1" DOME HEAD STYLE RIVET



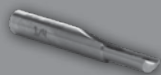
DIMENSIONS: 3/16" x 1"

PART NUMBER: F1RIVET + P, W, T
STOCK COLORS: STANDARD, WHITE, TAN

BOX QTY: 500
BOX WEIGHT: 2 LBS.

GRIP RANGE APPROXIMATELY .150-.460

1/4" SINGLE FLUTE CARBIDE ROUTER BIT



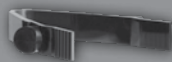
DIAMETER: 1/4"
LENGTH: 2 1/2"

PART NUMBER: T1/4ROUT
STOCK COLORS: N/A

BOX QTY: 1
BOX WEIGHT: .03 LBS.

HIGH QUALITY

RAIL LOCK



FOR USE ON 1 1/2", 1 3/4"
OR 2" RAIL WIDTH

PART NUMBER: RL15LOCK
STOCK COLORS: N/A

BOX QTY: 500
BOX WEIGHT: 15 LBS.

USED IN PLACE OF NOTCHING. DRILL 1/2" HOLE IN
RAIL, INSTALL LOCK AND SLIDE RAIL INTO POST.

DECK TRIM CHANNEL PUSH PINS



DIMENSIONS: 1" Length




PART NUMBER: F1PUSH
STOCK COLORS: White, Tan, Adobe, Mocha Walnut,
HONEY MAPLE, CHAI GRAY, GREEN TEAK

BOX QTY: 480 Total Box WEIGHT: 1 LB.

Drill 1/4" Hole

MISCELLANEOUS - FASTENERS AND ADHESIVES

Glue, Notching Tool & Replacement Jaws

	8 OZ. PVC GLUE DIMENSIONS: N/A BOX QTY: 8 BOX WEIGHT: 13 LBS. PART NUMBER: G8OZTUBE + W, C STOCK COLORS: WHITE, CLEAR SPECIFICALLY FORMULATED FOR PVC APPLICATIONS, UV PROTECTED, SETS UP QUICKLY, LONG SHELF LIFE.
	1.5 OZ. PVC GLUE DIMENSIONS: N/A BOX QTY: 24 BOX WEIGHT: 3 LBS. PART NUMBER: G15OZTUBE + W, C STOCK COLORS: WHITE, CLEAR SPECIFICALLY FORMULATED FOR PVC APPLICATIONS, UV PROTECTED, SETS UP QUICKLY, LONG SHELF LIFE.
	3/4" NOTCHING TOOL W/REPLACEABLE JAWS DIMENSIONS: N/A BOX QTY: 1 BOX WEIGHT: PART NUMBER: T3/4NOTCH STOCK COLORS: N/A
	REPLACEABLE JAWS KIT FOR 3/4" NOTCHING TOOL DIMENSIONS: N/A BOX QTY: 1 BOX WEIGHT: PART NUMBER: T3/4NOTCHJAWS STOCK COLORS: N/A

INDEX

Product and Descriptions Part # Page #

ADHESIVES - PAGE 54

8 OZ. PVC Glue.....	G8OZTUBE.....	54
1.5 OZ. PVC Glue.....	G15OZTUBE.....	54

DECK ACCESSORY, GORILLA DECK® - PAGE 53

Deck Trim Channel Push Pin	F1PUSH	53
----------------------------------	--------------	----

FASTENERS & RIVETS - PAGE 53

7/8" Dome Head Style Rivet.....	F875RIVET	53
1" Dome Head Style Rivet.....	F1RIVET	53
Rail Lock.....	RL15LOCK.....	53
Deck Trim Channel Push Pin	F1PUSH	53

END CAPS - PAGE 15

2" x 3-1/2" Internal End Cap	EC235	15
2" x 3-1/2" External End Cap	EEC235	15
1-1/2" x 5-1/2" Internal End Cap	EC1555	15
2" x 6" Internal End Cap	EC260	15
2" x 6" External End Cap	EEC260	15

GATE POCKETS - PAGES 16-17

2-1/8" x 2-3/4" x 4" Gate Pocket	GP218X234	16
1-3/4" x 3-1/2" x 4" Gate Pocket	GP17535X4	16
2" x 3-1/2" x 4" Gate Pocket	GP235X4	16
1-3/4" x 5-1/2" x 4" Deco Gate Pocket.....	GP17555X4	17
1-1/2" x 5-1/2" x 4" Gate Pocket	GP1555X4	17
2" x 6" x 4" Gate Pocket.....	GP26X4	17
2" x 7" x 4" Gate Pocket.....	GP27X4	17

GRAB RAIL, GORILLA®, SUMMIT® SECONDARY HANDRAIL - PAGES 32-35

8" Handrail with Aluminum Insert.....	HR88RAIL.....	33
3" Offset Aluminum Mounting Bracket	HRX3BRAKA	33
1" Handrail End Cap	HR1ECAP	33
90 Degree Aluminum Post Return	HRX90RETA	33
Straight Aluminum Wall Mount	HRX134SWMA	33
90 Degree Inside & Outside Corner	HRX90INOUTC.....	33
Inside Corner Mounting Bracket	HRX6INBKA	33
1-1/2" Metal Beauty Ring.....	HRX15BRA	34
32 Degree Stair Elbow.....	HR32ELBW	34
34 Degree Stair Elbow.....	HR34ELBW	34
36 Degree Stair Elbow.....	HR36ELBW	34
5 Degree Handicap Elbow.....	HR5ELBOW	34
180 Degree Post Return.....	HR180PR	34
Handicap Loop	HR12LOOP	35
6" Aluminum Joiner Kit with Screws	HR6JOINA	35
External Adjustable Joiner.....	HRXESJOIN	35

GORILLA® GUARD**RAIL BY SYSTEMS & STYLES - PAGES 23-31****2" X 3-1/2" SUMMIT® HANDRAIL BRACKETS - PAGES 24-25**

2" x 3-1/2" Summit® Rail Bracket.....	BL235S	24
2" x 3-1/2" Summit® Stair Bracket.....	BS235S	24
Replacement Summit® 2" x 3-1/2" Bracket Trim Cover	BRC235S	24
Replacement Summit® 2" x 3-1/2" Stair Bracket Trim Cover	BSC235S	24
22 1/2 Degree Summit® Adapter	BA225S	25
45 Degree Summit® Adapter	BA45S	25
8" Summit® Column Adapter.....	BA8CS	25

T-RAIL SUMMIT® HANDRAIL BRACKETS - PAGES 24-25

T-Rail Summit® Bracket	BLTRLS	24
T-Rail Summit® Stair Bracket	BSTRLS	24
Replacement Summit® T-Rail Bracket Trim Cover	BRCTRLS	24
Replacement Summit® T-Rail Stair Bracket Trim Cover	BRSTRLS	25
22 1/2 Degree Summit® Adapter	BA225S	25
45 Degree Summit® Adapter	BA45S	25
8" Summit® Column Adapter.....	BA8CS	25

Product and Descriptions Part # Page #

DECK-OVER, SUMMIT® HANDRAIL BRACKETS - PAGES 26

Deck-Over Summit® Bracket	BLDOVS	26
Deck-Over Summit® Stair Bracket	BS235SDO	26
22-1/2 Degree Deck-Over Summit® Adapter	BA225DOV	26
45 Degree Deck-Over Summit® Adapter	BA45DOV	26
8" Summit® Deck-Over Column Adapter.....	BA8CDOV	26
Deck-Over Summit® Field Cut Adapter.....	BAFCDOV	26
Summit® Deck Board Attachment Kit	B35DBRD	26

CONTOUR, SUMMIT® HANDRAIL BRACKETS - PAGE 25

Contour Summit® Bracket.....	BLCONS	25
Contour Summit® Stair Bracket	BSCONS	25
22 1/2 Degree Summit® Adapter	BA225S	25
45 Degree Summit® Adapter	BA45S	25
8" Summit® Column Adapter.....	BA8CS	25

SUMMIT® 2 SYSTEM, 2" X 3-1/2" HANDRAIL BRACKETS - PAGE 27

Summit® 2, 2" x 3-1/2" Bracket	BL235S2	27
Summit® 2, 2" x 3-1/2" Stair Bracket.....	BS235S2	27
Summit® 2, T-Rail Bracket	BLTRLS2	27
Summit® 2, T-Rail Stair Bracket.....	BSTRLS2	27
Summit® 2, Screw Caps	SCS2	27
Summit® 2, Bracket Hole Plugs	HPS2	27

SUMMIT® CONVEX, HANDRAIL BRACKETS - PAGE 28

Summit® Convex, 2" x 3-1/2" Bracket	BL235SX	28
Summit® Convex, 2" x 3-1/2" Stair Bracket	BS235SX	28
Summit® Convex, T-Rail Bracket	BLTRLSX	28
Summit® Convex, T-Rail Stair Bracket	BSTRLSX	28

NEXUS® SYSTEM, HANDRAIL BRACKETS - PAGE 29

Nexus® Railing Aluminum Mounting Bracket Kit	FC3408	29
Nexus® Railing Polymer Mounting Bracket Kit	FC3416	29
Nexus® 1-3/4" X 2-1/4" Bottom Cover Clip	FC3410	29
Nexus® 1-3/4" X 2-1/4" Bottom Brackets & Screws.....	FC3414	29
Nexus® 1-3/4" T-Rail Top Brackets & Screws.....	FC3413	29

NEXUS® 1 SYSTEM, HANDRAIL BRACKETS - PAGES 29-30

Nexus® 1, 1-3/4" T-Rail Bracket Top Cover Clip	FC3409	29
Nexus® 1, 1-3/4" T-Rail Top Adapter Cut Block	FC3411	29
Nexus® 1, 1-3/4" x 2-1/4" Bottom Adapter Cut Block	FC3412	30

NEXUS® 2 SYSTEM, HANDRAIL BRACKETS - PAGE 30

Nexus® 2, T-Rail Bracket Top Cover Clip	FC3417	30
Nexus® 2, T-Rail Stair Brackets & Screws	FC3418	30
22 1/2 Degree Nexus® Adapter	FC3420	30
45 Degree Nexus® Adapter	FC3421	30
8" Nexus® Column Adapter.....	FC3422	30
Nexus® Stair Screw Plugs	FC3415	30

INDEX

Product and Descriptions	Part #	Page #	Product and Descriptions	Part #	Page #
NEXUS® 2" X 3-1/2" SYSTEM - PAGE 31					
Nexus® 2" x 3-1/2" Brackets & Screws	FC3423	31	5" Adjustable 1-Piece Post Socket - 1-7/8" Pipe	PS5DIAM	49
Nexus® 2" x 3-1/2" Bracket Cover Clip	FC3424	31	4" Post Mount with Wings	PM44WING	50
Nexus® 2" x 3-1/2" Stair Brackets & Screws	FC3425	31	5" Post Mount with Wings	PM55WING	50
HOLE PLUGS - PAGE 16			4" Gorilla® Post Mount with Hardware	PM44GORW	50
5/8" Hole Plug	HP5/8	16	4" Gorilla® Post Mount without Hardware	PM44GORWO	50
1-1/4" Hole Plug	HP125	16	5" Gorilla® Post Mount with Hardware	PM55GORW	50
1-1/2" x 5-1/2" Decorative Hole Plug	HP1555	16	5" Gorilla® Post Mount without Hardware	PM55GORW0	50
LATTICE - PAGE 14			Vinyl Wedge Component for Gorilla® Mount	Wedge	51
4' x 8' Classic Lattice	L4X8CLS	14	4" Post Trim Component for Gorilla® Mount	TR44GOR	51
4' x 8' Privacy Lattice	L4X8PRV	14	5" Post Trim Component for Gorilla® Mount	TR55GOR	51
1' x 8' Pre-Cut Classic Lattice - Pallet	LPRECUT	14	Hardware Kit for Gorilla® Mount	PMGORHARDK	51
1' x 8' Pre-Cut Classic Lattice - Boxed	LCUTBOX	14	POST SOCKET - PAGE 49		
MATRIX, GORILLA® MATRIX ACCESSORIES - PAGES 41-43			5" Adjustable 1-Piece Post Socket - 1-7/8" Pipe	PS5DIAM	49
Gorilla® Matrix Mounting Plate w/Bushing & Trim	BR88UCM	42	POST WRAPS, GORILLA® WRAPS PROFILES & ACCESSORIES - PAGES 44-46		
5" x 5" Square Column Trim	TR55CT	42	8 PIECE GORILLA® POST WRAPS		
6-1/2" x 6-1/2" Square Column Trim	TR6565CT	42	1-3/4" x 10' Gorilla® Post Wrap Corner Trim	W17510CRN	45
8" x 8" Square Column Trim	TR88CT	42	4" x 10' Gorilla® Post Wrap Coverage Slat	W410SLAT	45
6-5/8" Round Column Trim	TR658RCT	42	6" x 10' Gorilla® Post Wrap Coverage Slat	W610SLAT	45
8.4" Round Column Trim	TR84RCT	42	8" x 10' Gorilla® Post Wrap Coverage Slat	W810SLAT	45
5" to 6-1/2" Transition Column Trim	TR565TCT	43	10" x 10' Gorilla® Post Wrap Coverage Slat	W1010SLAT	45
Adjustable Pergola Clips	PCADJ	43	12" x 10' Gorilla® Post Wrap Coverage Slat	W1210SLAT	45
PERGOLA ACCESSORY - PAGE 43			4 PIECE GORILLA® POST WRAPS		
Adjustable Pergola Clips	PCADJ	43	4" x 4" x 10' Gorilla® Post Wrap - 4 Piece	W410BOX	46
PICKET CAPS - PAGES 8, 11-12			6" x 6" x 10' Gorilla® Post Wrap - 4 Piece	W610BOX	46
7/8" x 1-1/2" PVC Spade Picket Cap	P7815S	12	4" to 6" Adjustable Trim Ring (4-Piece) Small Radius	TR46WAD	46
1-3/8" PVC Gothic Cap Square External	P138GOTH	8	RAIL FOOT - PAGE 21		
1-3/8" PVC Sharp Picket Cap	P138SH	12	Adjustable Rail Foot	RF138	21
1-1/2" PVC Sharp Picket Cap	P1515SH	12	RAIL LOCK - PAGE 53		
7/8" x 3" PVC Dog Ear Picket Cap	P783DE	12	Rail Lock	RL15LOCK	53
7/8" x 3" PVC Spade Picket Cap	P783S	12	RAIL MOUNTS - PAGE 18		
1" x 1" Arrowhead Picket Cap	P11A	12	1-1/2" x 5-1/2" Internal Rail Mount	RM1555	18
1" x 1" Boy Scout Picket Cap	P11B	12	1-3/4" x 5-1/2" Internal Rail Mount	RM17555	18
POST CAPS - PAGES 5-8			2" x 3-1/2" Internal Rail Mount	RM235	18
4" External PVC Pyramid Cap	C44PYRA	6	2" x 6" Internal Rail Mount	RM260	18
4" External Short Lip PVC Pyramid Cap	C44SHRT	6	Adjustable External Rail Mount, w/screws 1-1/2" TO 2" W and 5-1/2" TO 7" H	RMEADJ	18
5" External PVC Pyramid Cap	C55PYRA	6	Adjustable External Rail Mount, Replacement Covers	RMCEADJW	18
6-1/2" External PVC Pyramid Cap	C65PYRA	6	RIVETS - PAGE 53		
8" External PVC Pyramid Cap	C88HORSE	6	7/8" Dome Head Style Rivet	F875RIVET	53
4" Internal PVC Pyramid Cap	C44IPYRA	6	1" Dome Head Style Rivet	F1RIVET	53
5" Internal PVC Pyramid Cap	C55IPYRA	7	ROUTER BIT - PAGE 53		
4" PVC New England Cap	C44NE	7	1/4" Single Flute Carbide Router Bit	T1/4ROUT	53
5" PVC New England Cap	C55NE	7			
4" PVC Classic Cap	C44CLS	7			
5" PVC Classic Cap	C55CLS	7			
4" PVC Gothic Cap	C44GOTH	7			
5" PVC Gothic Cap	C55GOTH	8			
1-3/8" PVC Gothic Cap Square External	P138GOTH	8			
6" PVC Dental Cap	C66DENT	8			
6-1/2" PVC Dental Cap	C65DENT	8			
POST MOUNTS, GORILLA® MOUNTS & ACCESSORIES - PAGES 47-51					
Summit® Post Mount Base Component	PM178ZBASE	49			
Universal Hardware Kit	PMHARDKIT	49			
Summit® Wrap	PM44WRAP	49			

INDEX

Product and Descriptions Part # Page #

SOLAR LIGHTING, GORILLA® LIGHTING & ACCESSORIES - PAGES 36-40

4" Waypoint® Solar Light.....	reference page....	38
5" Waypoint® Solar Light.....	reference page....	38
4" Copper Top Waypoint® Solar Light.....	reference page....	38
5" Copper Top Waypoint® Solar Light.....	reference page....	38
4" Stainless Top Waypoint® Solar Light.....	reference page....	38
5" Stainless Top Waypoint® Solar Light.....	reference page....	38
4" Black Top Waypoint® Solar Light with White Base.....	reference page....	39
5" Black Top Waypoint® Solar Light with White Base.....	reference page....	39
4" Forest Top Waypoint® Solar Light with White Base.....	reference page....	39
5" Forest Top Waypoint® Solar Light with White Base.....	reference page....	39
4" Sunflower Top Waypoint® Solar Light with White Base.....	reference page....	39
5" Sunflower Top Waypoint® Solar Light with Black Base.....	reference page....	39
4" Grape Top Waypoint® Solar Light with White Base.....	reference page....	40
5" Grape Top Waypoint® Solar Light with White Base.....	reference page....	40
Replacement Circuit for Solid Color Tops (Not Metal).....	C-0113225	40
Replacement Circuit for Stained Glass Tops.....	C-134077	40
3-1/2 Solar Light Adaptor.....	SL35ADPTW	40

TOOLS - PAGES 54

3/4" Notching Tool.....	T3/4NOTCH	54
Replaceable Jaws Kit for 3/4" Notching Tool		
T3/4NOTCHJAWS.....		54

Product and Descriptions Part # Page #

TRIM RINGS - PAGES 19-22

4" New England Trim Ring.....	TR44NE	20
5" New England Trim Ring.....	TR55NE	20
4" 2-Piece New England Trim Ring	TR442PCNE	20
4" Classic Trim Ring	TR44CLS	20
5" Classic Trim Ring	TR55CLS	20
4" Low Trim Ring	TR44LT	20
4" Multi-Trim Ring	TR45MT	21
5" Multi-Trim Ring	TR565MT	21
4" to 6" Adjustable Trim Ring	TR46ADJ	21
4" to 6" Adjustable Trim Ring (4-Piece) Small Radius.....	TR46WAD	21
6-1/2" to 12" Adjustable Trim Ring (4-Piece).....	TR6512ADJ	21
Adjustable Rail Foot	RF138	21
6" Dental Post Skirt.....	TR66DENT	22
6-1/2" Dental Post Skirt	TR6565DENT	22
8"x 8" or 6.5" x 6.5" Column Base, Trim & Transition.....	TR865CB	22
8"x 8" Column Base Only	TR88CB	22

WAYPOINT® TOPS, METAL/ STAINED-GLASS - PAGES 9-10

4" Black Waypoint® Top	CM44TOPBK	9
5" Black Waypoint® Top	CM55TOPBK	9
4" Copper Waypoint® Top	CM44TOPCOP	9
5" Copper Waypoint® Top	CM55TOPCOP	9
4" Stainless Waypoint® Top	CM44TOPSTN	9
5" Stainless Waypoint® Top	CM55TOPSTN	9
4" Bronze Waypoint® Top	CM44TOPBRZ	9
5" Bronze Waypoint® Top	CM55TOPBRZ	9
4" Pearl Waypoint® Top	CG44TOPPRL	10
5" Pearl Waypoint® Top	CG55TOPPRL	10
4" Chestnut Waypoint® Top	CG44TOPCST	10
5" Chestnut Waypoint® Top	CG55TOPCST	10
4" Forest Waypoint® Top	CG44TOPFOR	10
5" Forest Waypoint® Top	CG55TOPFOR	10
4" Harvest Waypoint® Top	CG44TOPHAR	10
5" Harvest Waypoint® Top	CG55TOPHAR	10
4" Sunflower Waypoint® Top	CG44TOPSNF	10
5" Sunflower Waypoint® Top	CG55TOPSNF	10
4" Grape Waypoint® Top	CG44TOPGRP	10
5" Grape Waypoint® Top	CG55TOPGRP	10

NOTES: